



1409/177-219 Mitchell Road Erskineville NSW

1  1  1 

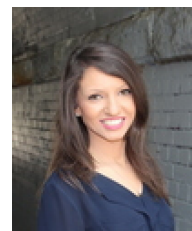
This tastefully renovated apartment is positioned on the fourth floor & situated in the impressive resort style complex Sydney Park Village. Taking advantage of the West facing aspect to the manicured gardens and grounds, this quiet & peaceful home is move-in ready to either occupy or rent. Surrounded by cafes, pocket parks & nightlife - enjoy the community lifestyle & walk everywhere convenience.

Open plan living & dining w/ air con & custom in built storage
New gas kitchen w/ new stainless steel appliances, new stone benchtop & plenty of storage
Covered West facing balcony overlooking the manicured gardens

Type : Apartment
Price : \$ 650,000
View : <https://www.beaumccaffery.com.au/6880183>

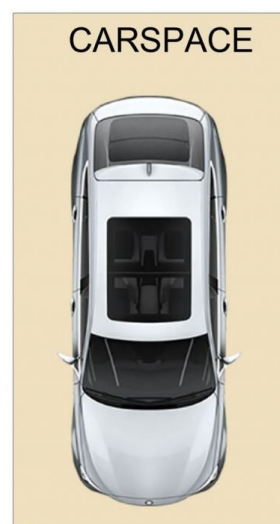
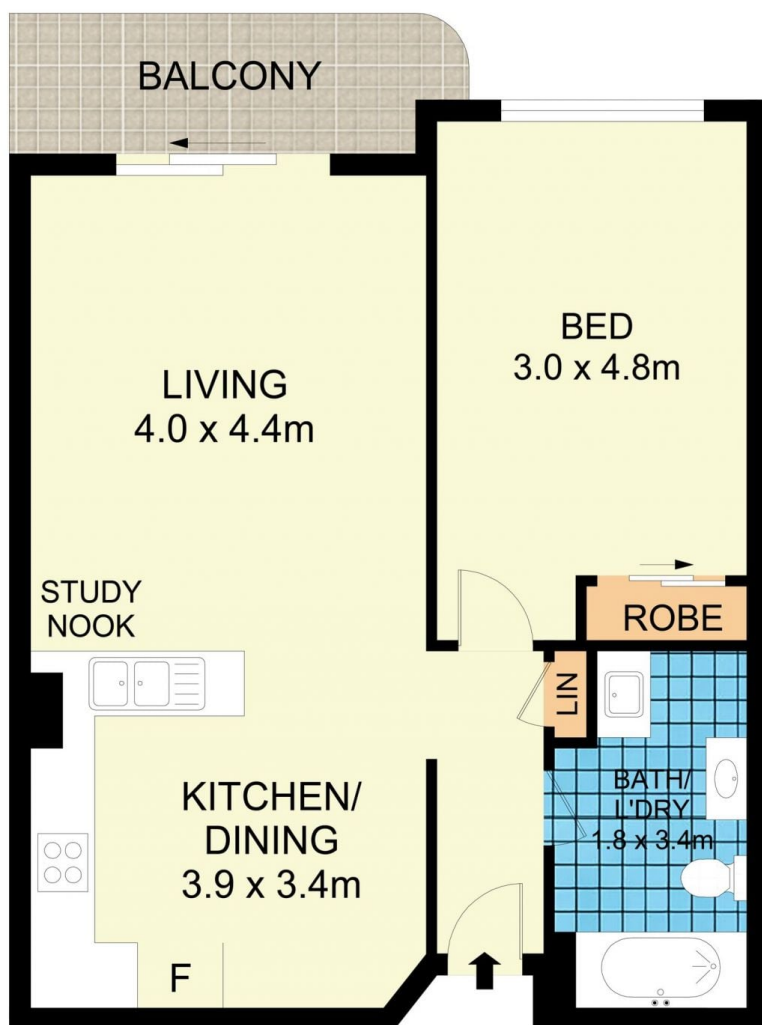
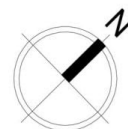


Melissah McCaffery J P
02 9565 5333



Rebecca Voncina
02 9565 5333

[For full version visit the website](https://www.beaumccaffery.com.au)



1409/177-219 Mitchell Road, Erskineville

Disclaimer

Floor Plan measurements are approximate and are for illustrative purposes only. While we cannot doubt the floor plans accuracy, we make no guarantee, warranty or representation as to the accuracy and completeness of the floor plan