



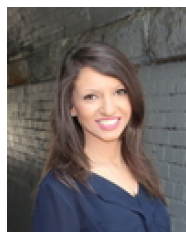
9609/177-219 Mitchell Road Erskineville NSW

1  1 

Enviably positioned to offer effortless inner city living, this renovated apartment features light filled open plan living spaces, contemporary appointments and generous outdoor space. With a premium feel throughout and a desirable address to match, it's an entry level home/investment with a sense of prestige.

Type : Apartment
Price : \$ 600,000
Land Size : 58 sqm
View : <https://www.beaumccaffery.com.au/6924325>

Open plan living & dining area w/ air-conditioning
 Generous balcony w/ pleasant outlook
 Renovated gas kitchen w/ quality appliances
 Generous master bedroom w/ study & dual mirrored BIR
 Modern bathroom w/ tub & laundry facilities
 Intercom, lift access, 24/7 on-site security & pet friendly complex
 Market rent approx. \$520/week

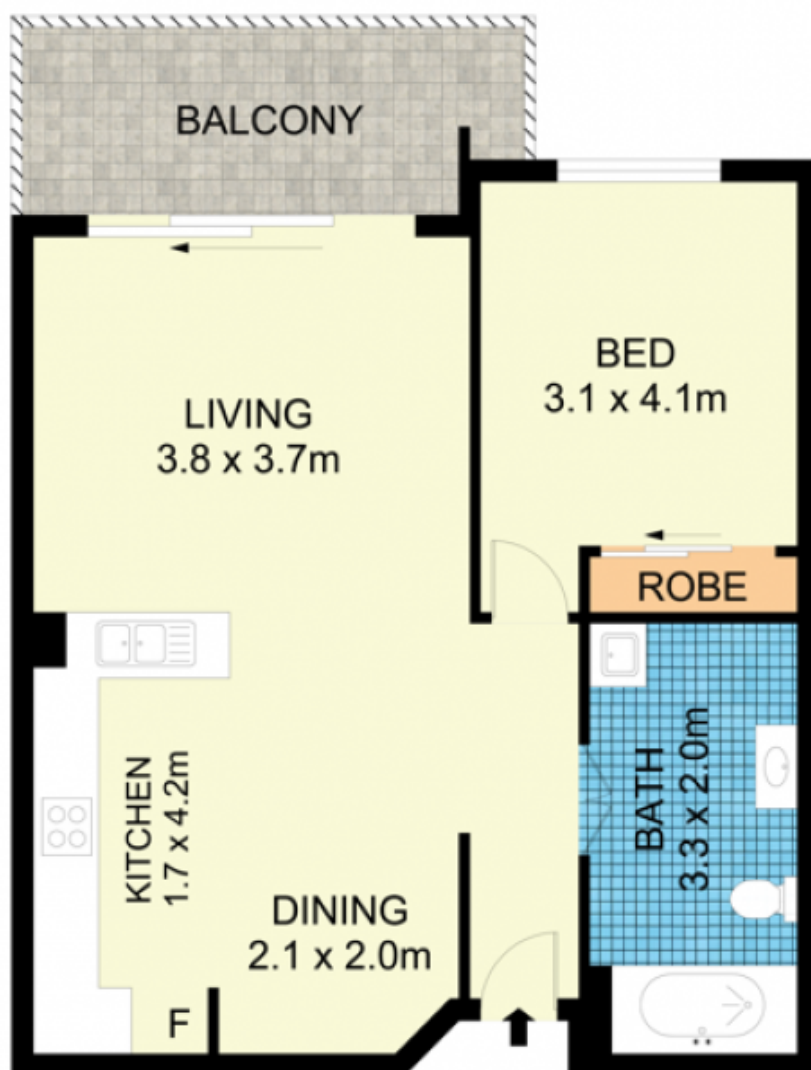


Rebecca Voncina
02 9565 5333



Michael McCaffery
02 9565 5333

[For full version visit the website](https://www.beaumccaffery.com.au)



9609/177-219 Mitchell Road, Erskineville

Disclaimer

Floor Plan measurements are approximate and are for illustrative purposes only. While we cannot doubt the floor plans accuracy, we make no guarantee, warranty or representation as to the accuracy and completeness of the floor plan.