



17606/177-219 Mitchell Road Erskineville NSW

1  1  1 

Nestled amid the oasis-like gardens and resort style enclave of Sydney Park Village, this North facing apartment features an open plan layout with light filled interiors and secure parking - the ideal first home or lucrative investment.

Type : Apartment
Price : \$ 780,000
Land Size : 78 sqm
View : <https://www.beaumccaffery.com.au/6953397>

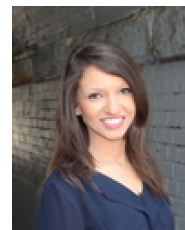
Open plan living & dining w/ air-con leads onto the balcony
 Master bedroom w/ WIR
 Well-appointed gas kitchen w/ s/s appliances & storage
 Main bathroom w/ tub & laundry facilities
 Secure undercover parking & ample visitor parking
 Intercom access & 24 hour on-site security

Sitting on the fringe of Sydney's inner west and inner city, its popular location is 5km from the CBD, 5 minute walk to

[For full version visit the website](https://www.beaumccaffery.com.au)



Melissah McCaffery J P
02 9565 5333



Rebecca Voncina
02 9565 5333