



18503/177-219 Mitchell Road Erskineville NSW

2  2  1 

Generous in size and features, this two bedroom apartment boasts light filled, oversized living. Situated in the highly sought after Sydney Park Village complex, it offers a versatile floor plan with stylish finishes.

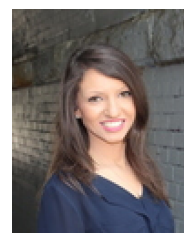
Light filled open plan lounge & dining area
Entertainers balcony w/ large balcony
Gas kitchen w/ stainless steel appliances
Spacious bedrooms w/ built-in robes
Stylish bathrooms & separate laundry w dryer
Secure car space & ample visitor parking

Sitting on the fringe of Sydney's inner west and inner city, its popular location is 5km from the CBD, 5 minute walk to St Peters station or 10 minute walk to Erskineville station

Type : Apartment
Price : \$ 1,140,000
View : <https://www.beaumccaffery.com.au/6955621>



Melissah McCaffery J P
02 9565 5333



Rebecca Voncina
02 9565 5333

[For full version visit the website](https://www.beaumccaffery.com.au)