

17610/177-219 Mitchell Road Erskineville NSW

1  1  1 

Peacefully set on the top floor of Eden Grove in Sydney Park Village, presenting an open plan layout & desirable internal facing views overlooking the complex grounds, manicured gardens & facilities. Offering a lifestyle of unrivalled sophistication within footsteps of the famous King Street, Oxford Street & cafes, dining + nightlife. Step out the door to enjoy a cosmopolitan lifestyle w/ a short stroll to restaurants, bars, cinemas & the village hubs of Erko, Alexandria & Newtown. The ultimate Inner Sydney lifestyle address - opportunity to entertain or enjoy uninterrupted views from every window.

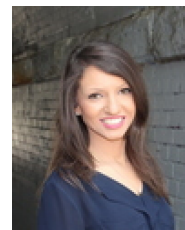
Double brick & quality building
Spacious open plan living & dining area w/ floor-to-ceiling glass & complex views

[For full version visit the website](https://www.beaumccaffery.com.au)

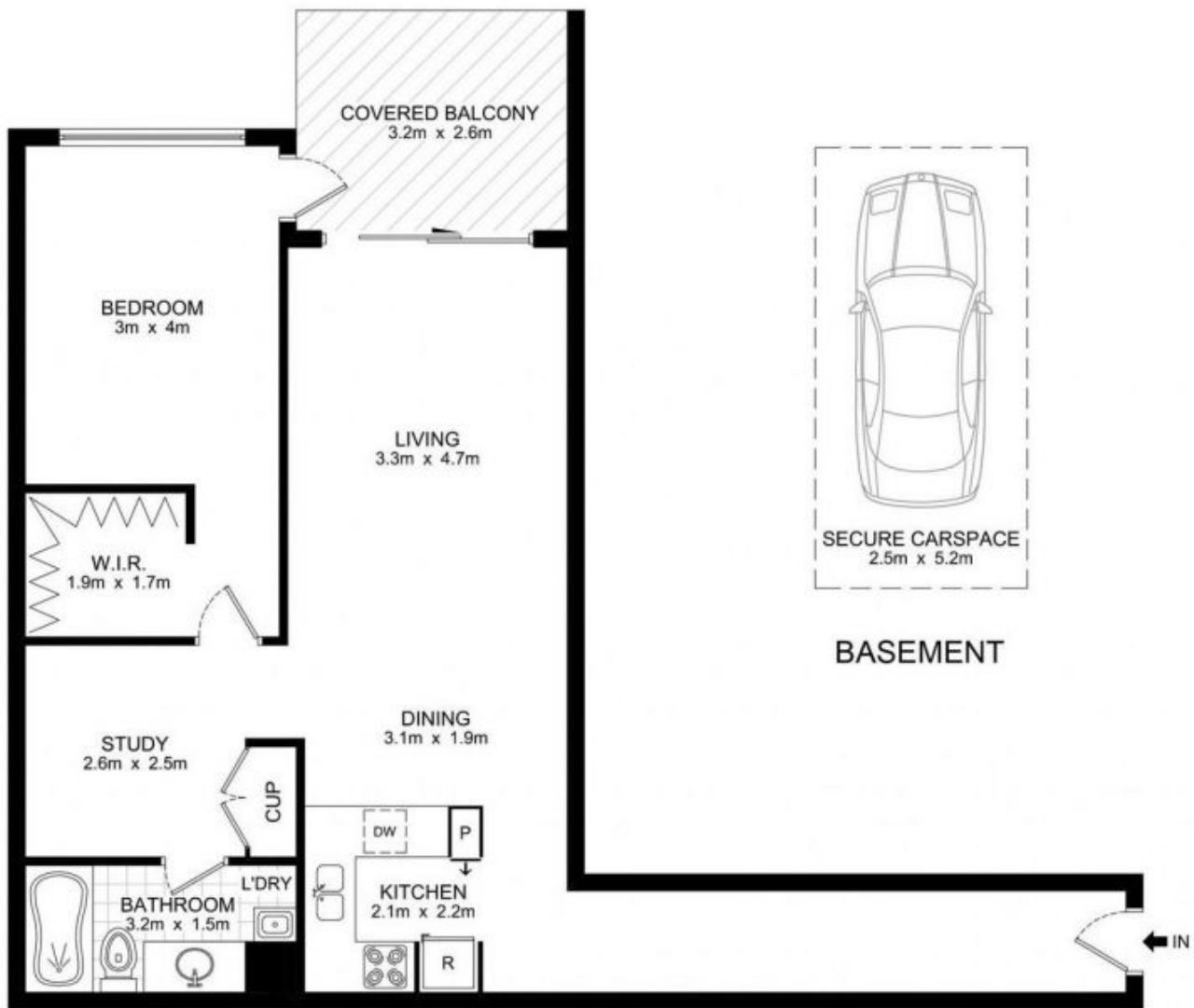
Type : Apartment
Price : \$ 730,000
Land Size : 90 sqm
View : <https://www.beaumccaffery.com.au/706574>
1



Melissah McCaffery J P
02 9565 5333



Rebecca Voncina
02 9565 5333



LEVEL 6



17610/177-219 Mitchell Road, Erskineville

Disclaimer

Floor plan measurements are approximate and are for illustrative purposes only. While we cannot doubt the floor plans accuracy, we make no guarantee, warranty or representation as to the accuracy and completeness of the floor plan