

14403/177-219 Mitchell Road Erskineville NSW

3  2  2 

This house-inspired apartment holds a peaceful elevated position within Sydney Park Village on the fringe of the CBD, this home promises the ultimate inner-city lifestyle. Boasting a sun-soaked west aspect in the newest stage of the development, it delivers house like proportions elevated by beautifully appointed interiors. From the moment you step inside this renovated home you'll be in awe of its style & sophistication. Set within a lifestyle hub on the doorstep of Erko's prized village scene, its setting is moments from prestigious schools, the CBD, shopping & dining - the ideal sanctuary for growing families or downsizers looking for low-maintenance, effortless living & tightly held resort style community.

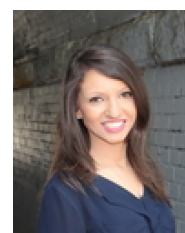
Double brick & quality building

[For full version visit the website](https://www.beaumccaffery.com.au)

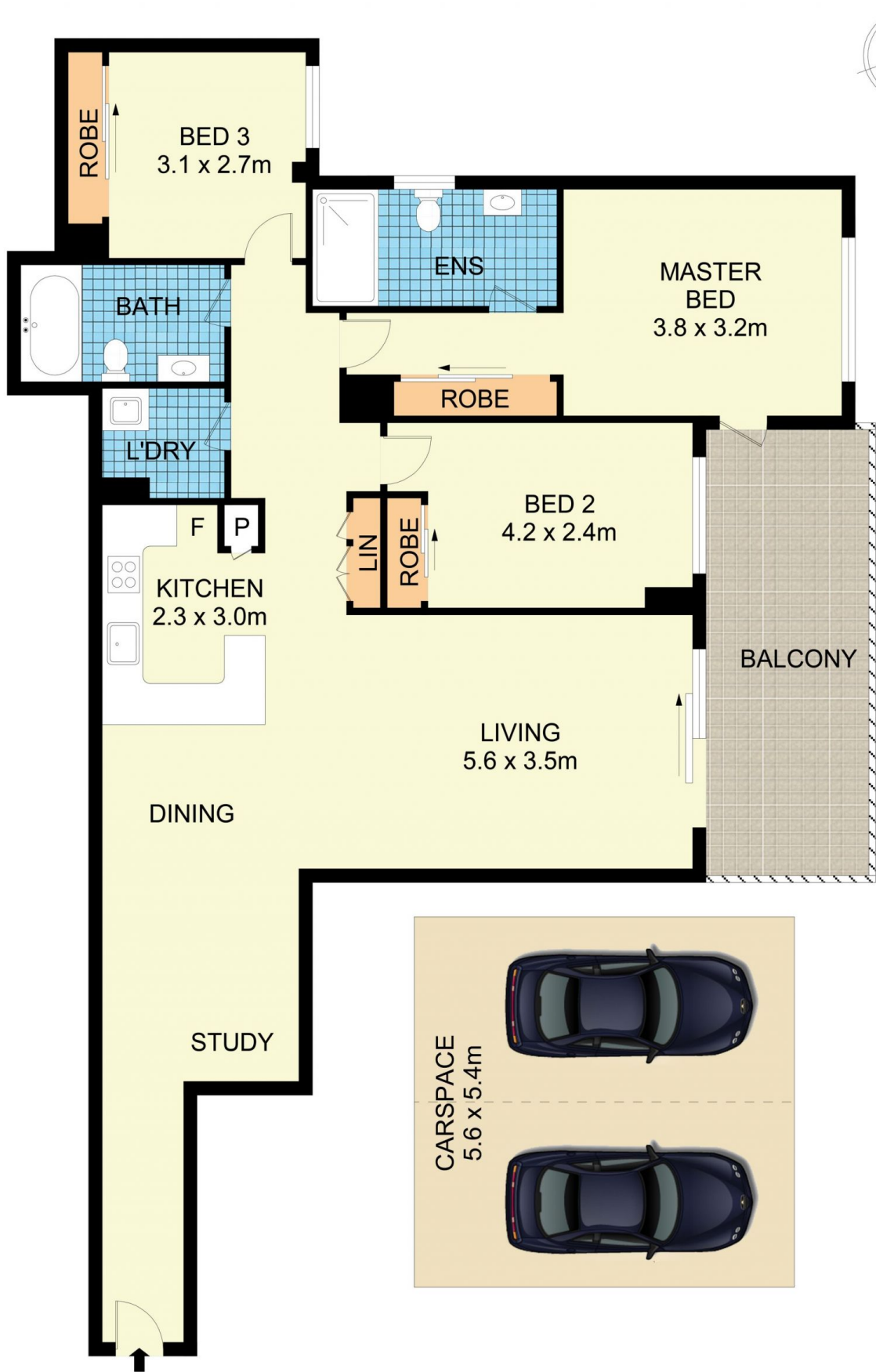
Type : Apartment
Price : \$ 1,300,000
Building Size : 149 sqm
Land Size : 149 sqm
View : <https://www.beaumccaffery.com.au/7076477>



Melissah McCaffery J P
02 9565 5333



Rebecca Voncina
02 9565 5333



14403/177-219 Mitchell Road, Erskineville

Disclaimer
 Floor Plan measurements are approximate and are for illustrative purposes only. While we cannot doubt the floor plans accuracy, we make no guarantee, warranty or representation as to the accuracy and completeness of the floor plan