



**7408/177-219 Mitchell Road Erskineville NSW**

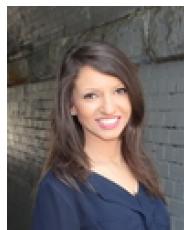
1  1  1 

An inner-city escape w/ modern ambiance & tranquil surrounds, this desirable apartment features light filled interiors throughout. Presenting an open plan layout & attractive corner position coupled w/ desirable internal views of the complex, manicured gardens & resort style facilities - a quality first home/investment of ultimate convenience & amenity.

Double brick & quality building  
Open plan living & dining area w/ internal facing balcony overlooking the manicured gardens  
Master bedroom w/ double BIR  
Renovated gas kitchen w/ s/s appliances & plenty of storage  
Main bathroom w/ tub & separate laundry

[For full version visit the website](https://www.beaumccaffery.com.au)

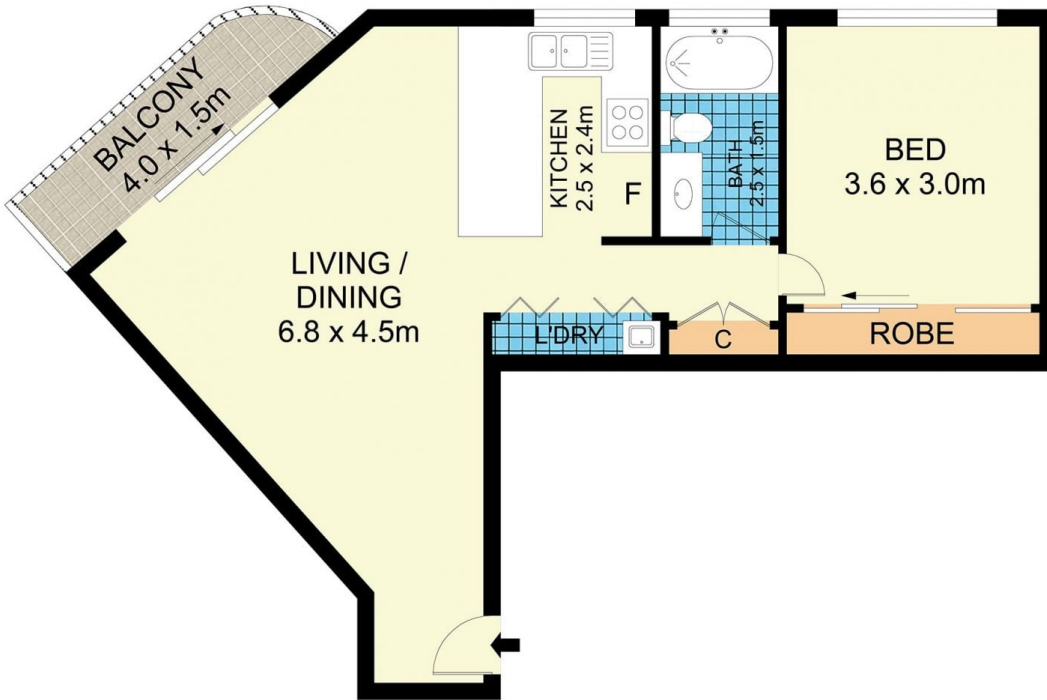
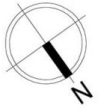
**Type** : Apartment  
**Price** : \$ 635,000  
**Land Size** : 75 sqm  
**View** : <https://www.beaumccaffery.com.au/7078847>



**Rebecca Voncina**  
02 9565 5333



**Michael McCaffery**  
02 9565 5333



7408/177-219 Mitchell Road, Erskineville



Disclaimer  
Floor Plan measurements are approximate and are for illustrative purposes only. While we cannot doubt the floor plans accuracy, we make no guarantee, warranty or representation as to the accuracy and completeness of the floor plan