

9605/177-219 Mitchell Road Erskineville NSW

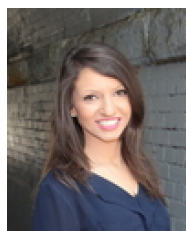
1  1  1 

Capturing a prized North facing aspect and elevated position, this renovated apartment delivers endless lifestyle appeal in a vibrant resort-style setting. Presenting an open plan layout with light filled interiors throughout, enjoy low maintenance living coupled with convenient, on-site facilities and lush green surrounds - it's the perfect inner west start!

Type : Apartment
Price : \$ 647,000
Building Size : 72 sqm
Land Size : 72 sqm
View : <https://www.beaumccaffery.com.au/7138139>

Double brick & quality building
 Spacious, light filled open plan living & dining area
 Private, North facing balcony w/ desirable leafy outlook
 Renovated gas kitchen w/ new appliances (no separate gas bill in this strata plan)
 Master bedroom w/ mirrored BIR & study nook
 Modern bathroom w/ tub & laundry facilities

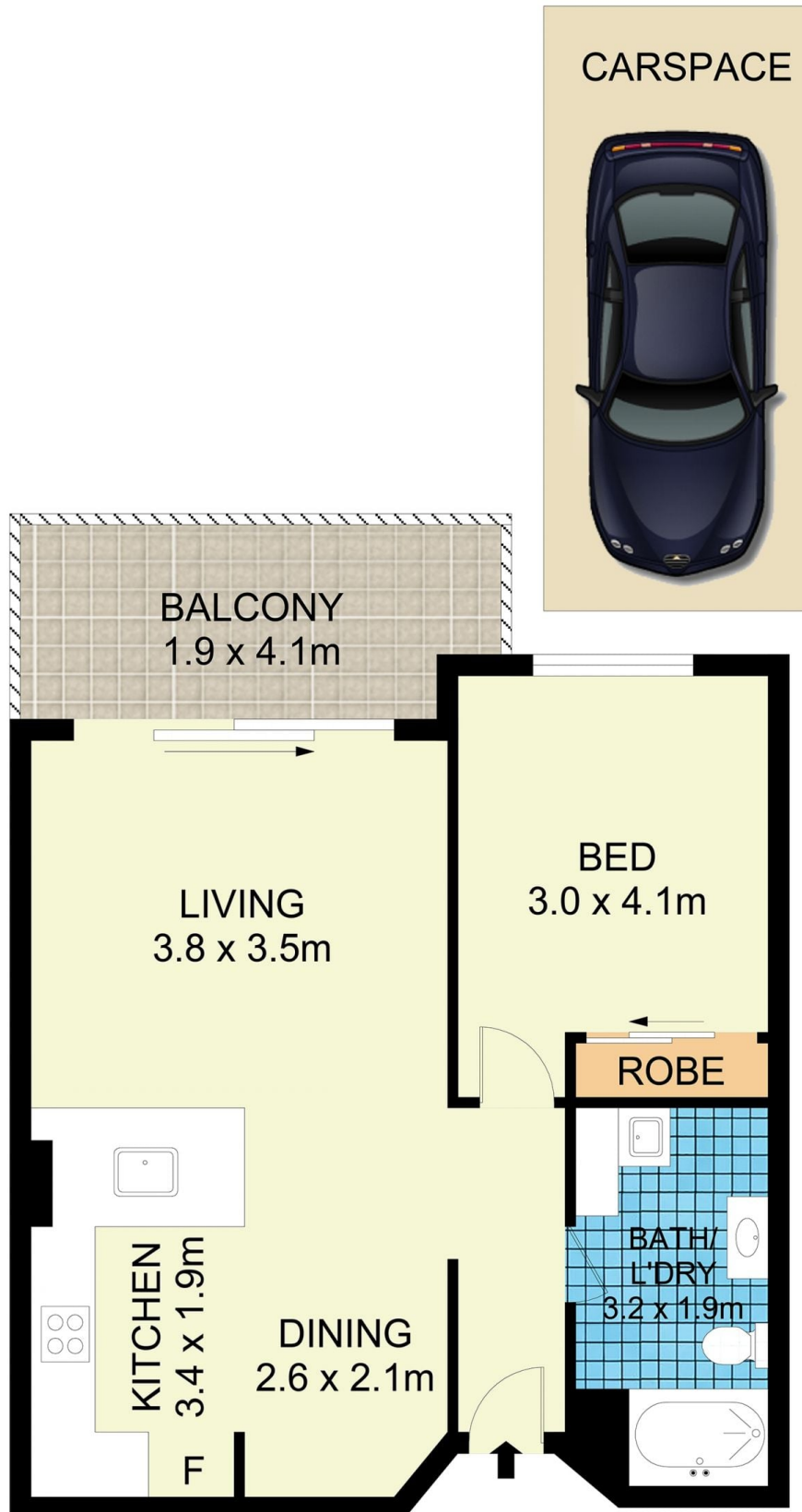
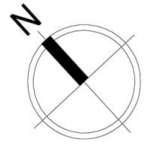
[For full version visit the website](https://www.beaumccaffery.com.au)



Rebecca Voncina
02 9565 5333



Michael McCaffery
02 9565 5333



9605/177-219 Mitchell Road, Erskineville

Disclaimer

Floor Plan measurements are approximate and are for illustrative purposes only. While we cannot doubt the floor plans accuracy, we make no guarantee, warranty or representation as to the accuracy and completeness of the floor plan