



18501/177-219 Mitchell Road Erskineville NSW

2  2  1 

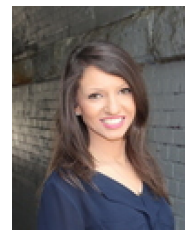
Set within the lush-green surrounds of Sydney Park Village, this desirable two bedroom apartment with secure basement parking has a generous 110 sqm on title. Featuring an open plan layout with light filled interiors throughout, premium garden views and convenient location inspires a promising yet effortless inner city lifestyle.

Type : Apartment
Price : \$ 998,000
Building Size : 110 sqm
View : <https://www.beaumccaffery.com.au/7152031>

Double brick & quality building
 Open plan living & dining area w/ air-conditioning
 Covered outdoor area w/ desirable internal views of the complex gardens + outdoor pool
 Well-appointed gas kitchen w/ quality appliances & plenty of storage
 Master bedroom w/ WIR & ensuite
 Generous second bedroom w/ BIR

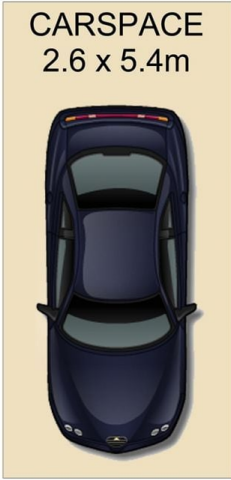
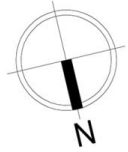


Michael McCaffery
 02 9565 5333



Rebecca Voncina
 02 9565 5333

[For full version visit the website](https://www.beaumccaffery.com.au)



18501/177-219 Mitchell Road, Erskineville

Disclaimer
Floor Plan measurements are approximate and are for illustrative purposes only. While we cannot doubt the floor plans accuracy, we make no guarantee, warranty or representation as to the accuracy and completeness of the floor plan