

8403/177-219 Mitchell Road Erskineville NSW

2 🛏 2 🚿 1 🚗

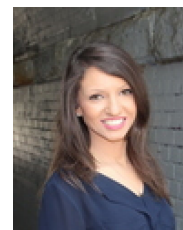
With views of the CBD skyline & located within one of the most exclusive resort style complexes in Sydney 'Sydney Park Village', this sophisticated 111 sqm single-level design has been revamped & features light filled & open plan spaces, a renovated kitchen, fresh paint, new lighting + carpet - Its move in ready with nothing to spend, enjoy effortless living + the utmost convenience of the inner west!

Type : Apartment
Building Size : 111 sqm
View : <https://www.beaumccaffery.com.au/7185390>

Double brick & quality building
 Oversized open plan living & dining areas w/floor-to-ceiling glass, air-con + private North aspect
 North facing balcony w/ impressive city views
 Renovated gas stone kitchen w/ s/steel appliances & plenty of storage

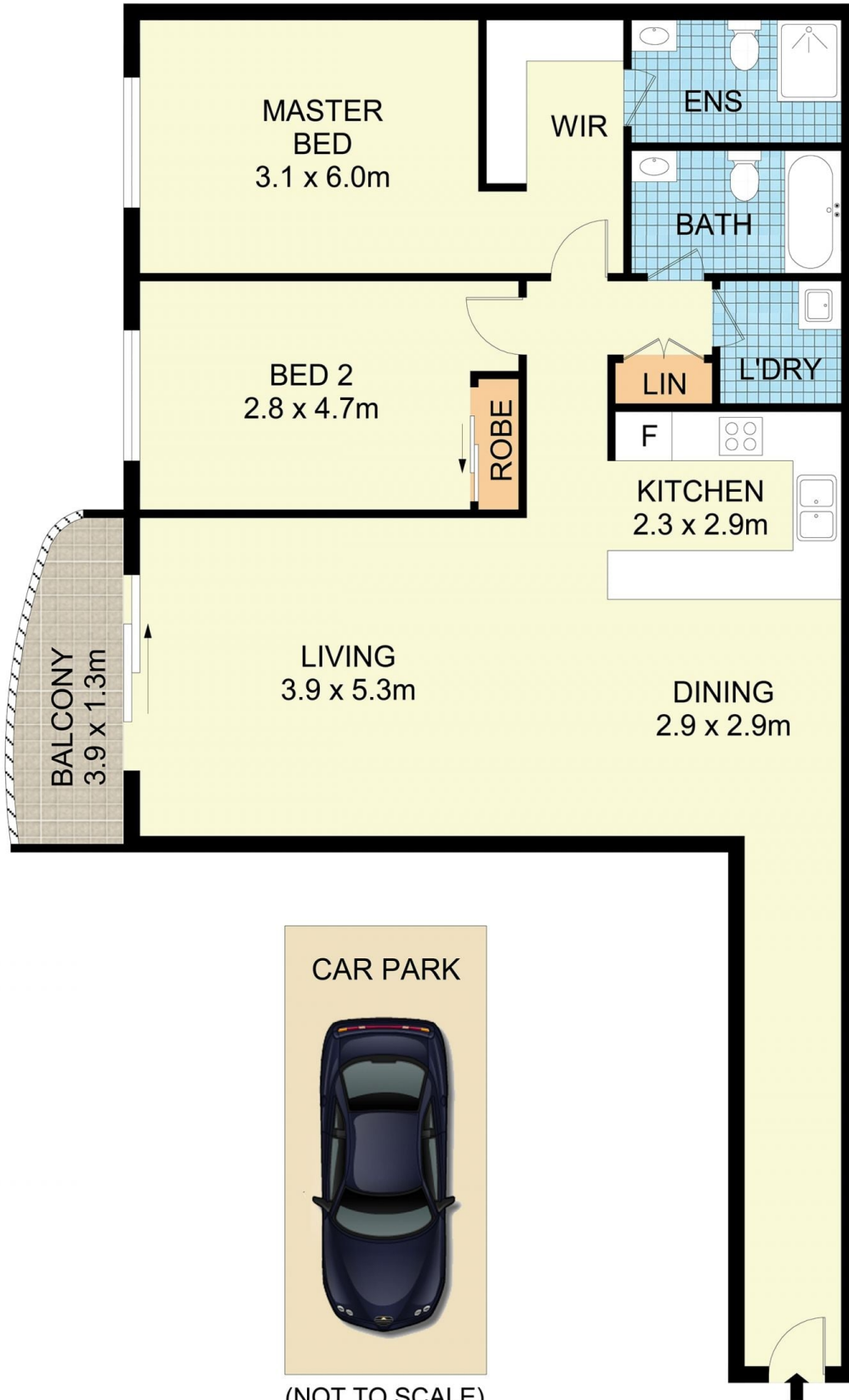
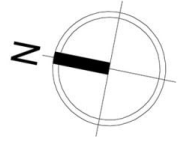


Melissah McCaffery J P
02 9565 5333



Rebecca Voncina
02 9565 5333

[For full version visit the website](https://www.beaumccaffery.com.au)



8403/177-219 Mitchell Road, Erskineville

Disclaimer

Floor Plan measurements are approximate and are for illustrative purposes only. While we cannot doubt the floor plans accuracy, we make no guarantee, warranty or representation as to the accuracy and completeness of the floor plan