



2311/8 Eve Street Erskineville nsw

1  1  1 

Designed by award winning architects Allen Jack + Cottier, this modern apartment is situated in the exclusive 'Motto' building. Showcasing updated interiors & an abundance of natural light, this dual level residence positioned on the corner of the third floor is one of a kind - surrounded by pocket parks, cafes & pathway access to Sydney Park, enjoy the community vibe & ultimate locale convenience.

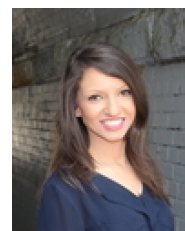
Open plan living & dining area w/ floor to ceiling glass & ceiling fans
East facing balcony w/ desirable internal garden & pool views
Caesar stone gas kitchen & integrated s/s appliances + extra side windows
Impressive timber & wire tread structure staircase leads to

[For full version visit the website](https://www.beaumccaffery.com.au)

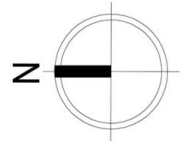
Type : Apartment
Price : \$ 850,000
Building Size : 81 sqm
Land Size : 81 sqm
View : <https://www.beaumccaffery.com.au/7570325>



Melissah McCaffery J P
02 9565 5333



Rebecca Voncina
02 9565 5333



2311/8 Eve Street, Erskineville

Disclaimer

Floor Plan measurements are approximate and are for illustrative purposes only. While we cannot doubt the floor plans accuracy, we make no guarantee, warranty or representation as to the accuracy and completeness of the floor plan