



3408/177-219 Mitchell Road Erskineville NSW

2  2  1 

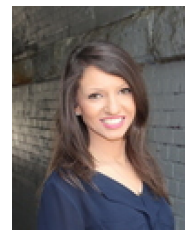
This desirable park-side retreat delivers the essence of inner-city living within the lush green surrounds of Sydney Park Village. Offering 112sqm on title & desirable private outlook, complete with parking & onsite facilities including gymnasium, indoor and outdoor pools, tennis courts & loads more - this is the perfect home for a young couple, family or lucrative investment for the savvy opportunist.

Type : Apartment
Price : \$ 910,000
Land Size : 112 sqm
View : <https://www.beaumccaffery.com.au/7615067>

Spacious, open plan living & dining area
 Generous balcony w/ views to Sydney Park & Alan Davidson oval
 Well-appointed gas kitchen w/ quality appliances
 Oversized master bedroom w/ BIR & en-suite
 Spacious second bedroom w/ BIR
 Main bathroom w/ tub & separate laundry

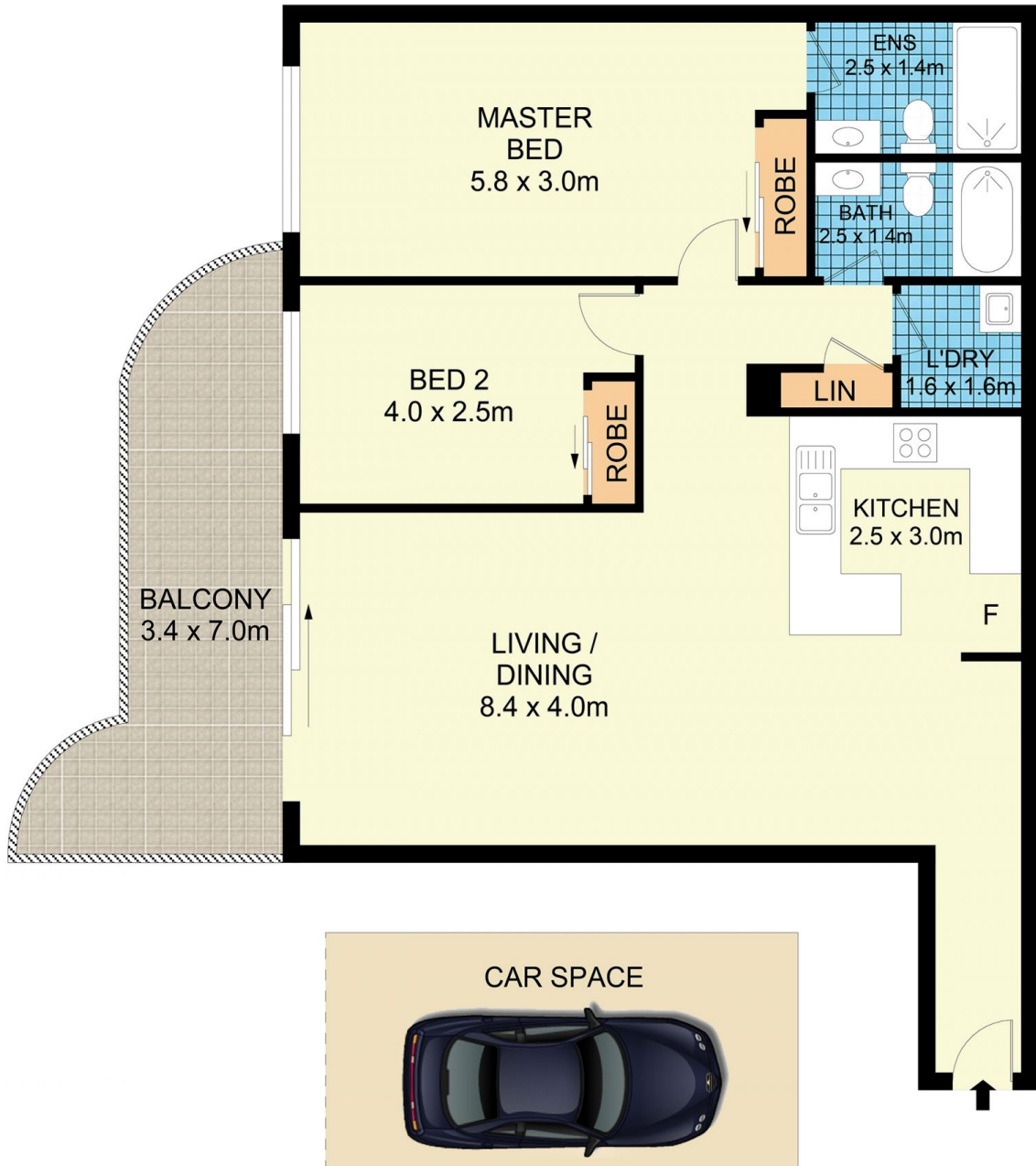
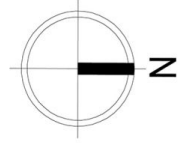


Michael McCaffery
02 9565 5333



Rebecca Voncina
02 9565 5333

[For full version visit the website](https://www.beaumccaffery.com.au)



3408/177-219 Mitchell Road, Erskineville

Disclaimer

Floor Plan measurements are approximate and are for illustrative purposes only. While we cannot doubt the floor plans accuracy, we make no guarantee, warranty or representation as to the accuracy and completeness of the floor plan.