



15101/177-219 Mitchell Road Erskineville NSW

1  1  1 

Tranquilly set within the vibrant tight-knit community of Sydney Park Village, this impressive courtyard apartment boasts an expansive outdoor area and modern interiors throughout. Designed for entertainers, it is the ideal sanctuary for those seeking low-maintenance, relaxed living.

East facing & refreshed throughout - enjoy the inner west convenience & community resort lifestyle.

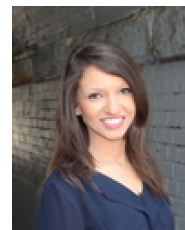
Double brick & quality building
Enormous, low maintenance courtyard w/ established garden-bed & mature lemon tree
Open plan living & dining area that flows seamlessly to the courtyard
Modern gas kitchen w/ stainless steel appliances

[For full version visit the website](https://www.beaumccaffery.com.au)

Type : Apartment
Price : \$ 810,000
Land Size : 56 sqm
View : <https://www.beaumccaffery.com.au/7624260>



Melissah McCaffery J P
02 9565 5333



Rebecca Voncina
02 9565 5333