



15505/177-219 Mitchell Road Erskineville NSW

2  2  1 

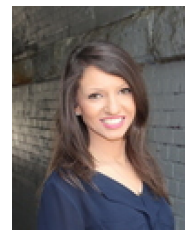
Positioned in a highly prized setting and complemented with resort-style amenities, this apartment presents a convenient urban lifestyle with minimal upkeep. Boasting modernized, light filled interiors throughout and a spacious outdoor area - look no further, downsize for simplified living, or elevate your living standards to a lavish resort-inspired lifestyle.

Spacious, light filled open plan living & dining area
 Generous covered entertainers' balcony
 Renovated gas kitchen w/ s/s appliances
 Master bedroom w/ walk in robe, ensuite & balcony access
 Generous second bedroom w/ BIR
 Main bathroom w/ bathtub & separate laundry
 Secure undercover parking & ample visitor parking

Type : Apartment
Price : \$ 1,095,000
Land Size : 112 sqm
View : <https://www.beaumccaffery.com.au/7644308>

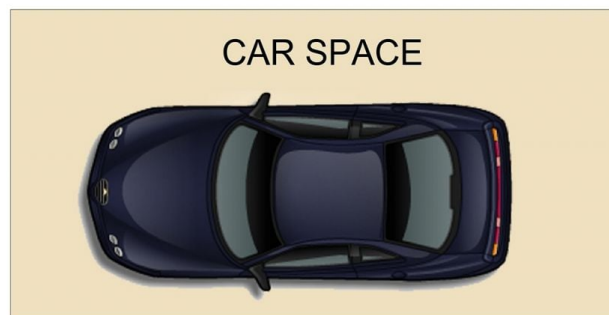
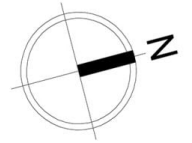


Melissah McCaffery J P
02 9565 5333



Rebecca Voncina
02 9565 5333

[For full version visit the website](https://www.beaumccaffery.com.au)



15505/177-219 Mitchell Road, Erskineville

Disclaimer

Floor Plan measurements are approximate and are for illustrative purposes only. While we cannot doubt the floor plans accuracy, we make no guarantee, warranty or representation as to the accuracy and completeness of the floor plan