



**7501/177-219 Mitchell Road Erskineville NSW**

2  2  1 

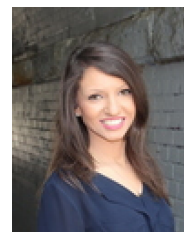
With views of the city skyline & located within the highly regarded resort style complex 'Sydney Park Village', this sophisticated single-level design has been revamped & features light filled & open plan spaces, a new custom-built kitchen, fresh paint, new carpet + plantation shutters throughout - It's prime inner west location makes it the perfect home or investment purchase!

**Type** : Apartment  
**Land Size** : 103 sqm  
**View** : <https://www.beaumccaffery.com.au/7661798>

Double brick & quality building  
 Oversized open plan living & dining area w/floor-to-ceiling glass, air-con + full length plantation shutters  
 Covered balcony w/ CBD skyline & internal complex views  
 Custom-built gas kitchen w/ Caesarstone bench top, s/steel appliances & plenty of storage  
 New carpet, plantation shutters & new paint throughout

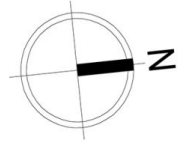


**Melissah McCaffery J P**  
02 9565 5333

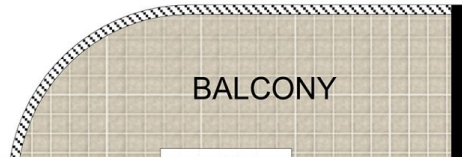


**Rebecca Voncina**  
02 9565 5333

[For full version visit the website](https://www.beaumccaffery.com.au)



**BASEMENT**



**BALCONY**



**LEVEL 5**



**7501/177-219 Mitchell Road, Erskineville**

**Disclaimer**

Floor Plan measurements are approximate and are for illustrative purposes only. While we cannot doubt the floor plans accuracy, we make no guarantee, warranty or representation as to the accuracy and completeness of the floor plan