

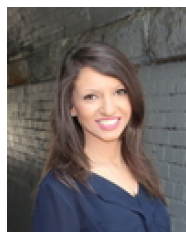
**307/2 Pearl Street Erskineville NSW**

1  1 

Set within a vibrant village precinct and located within the prestigious 'Erko' complex, this modern apartment features a versatile open plan design with a second bedroom or study, seamless in/outdoor living spaces and a generous covered balcony - surrounded by pocket parks, cafes & pathway access to Sydney Park, enjoy the community vibe & ultimate locale convenience, it's the perfect inner west start!

Light filled, open plan living & dining area w/ hardwood flooring  
 Oversized entertainer's balcony  
 Designer gas kitchen w/ stone benchtops & European appliances  
 Master bedroom w/ double built-in robes & balcony access

**Type** : Apartment  
**Price** : \$ 690,000  
**Building Size** : 65 sqm  
**View** : <https://www.beaumccaffery.com.au/7682076>

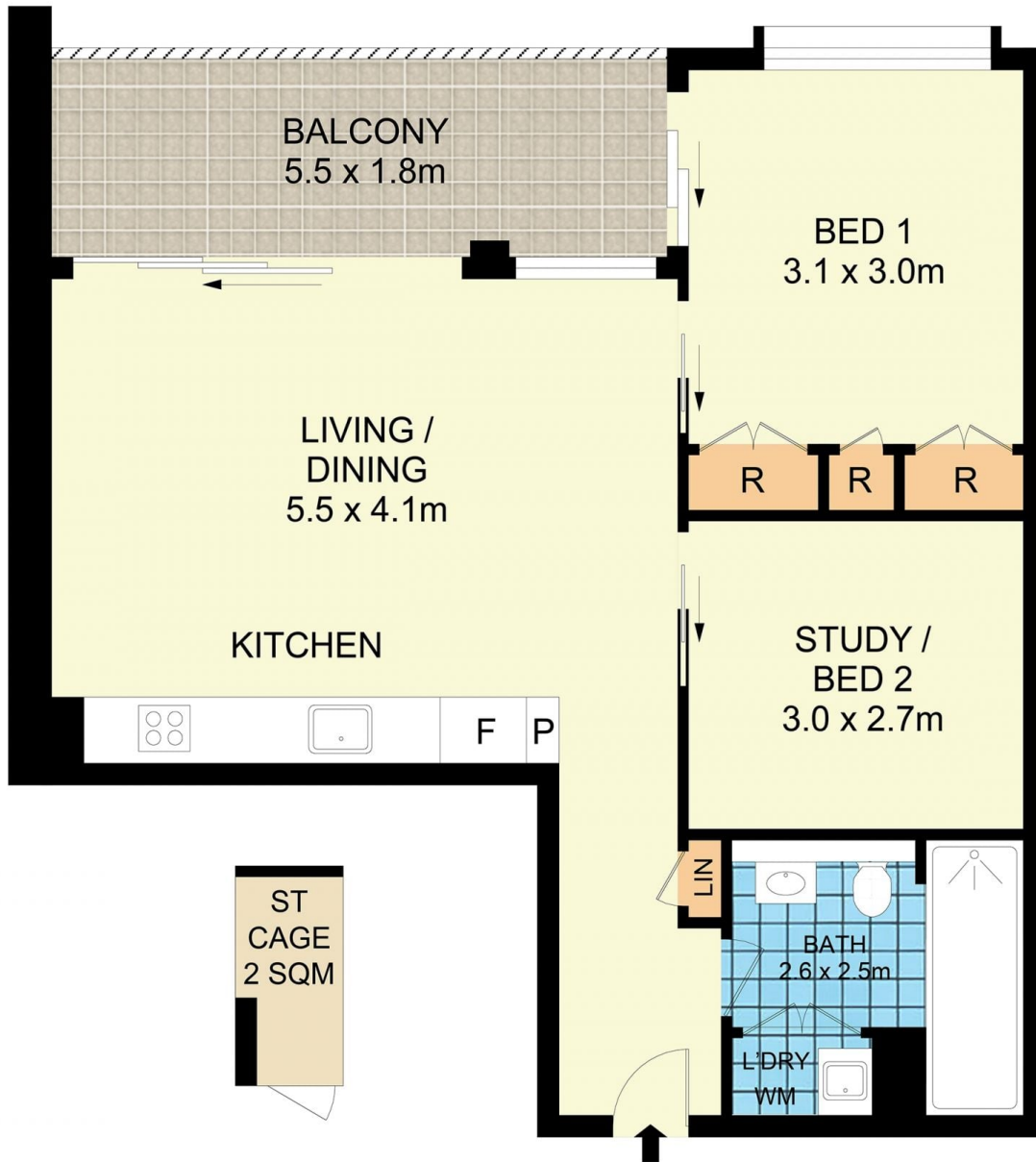
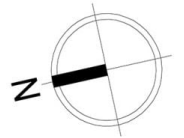


**Rebecca Voncina**  
02 9565 5333



**Michael McCaffery**  
02 9565 5333

[For full version visit the website](https://www.beaumccaffery.com.au)



## 307/2 Pearl Street, Erskineville



### Disclaimer

Floor Plan measurements are approximate and are for illustrative purposes only. While we cannot doubt the floor plans accuracy, we make no guarantee, warranty or representation as to the accuracy and completeness of the floor plan.