



14404/177-219 Mitchell Road Erskineville NSW

2  2  1 

Situated in the newest stage of the development and boasting a sun-soaked west aspect, this elevated apartment delivers endless lifestyle appeal in a vibrant resort-style setting. Presenting an open plan layout with light filled and updated interiors throughout, enjoy low maintenance living coupled with Inner Wests most coveted conveniences - the ideal sanctuary for young couples, families or downsizers looking for effortless living in a tightly held resort style community.

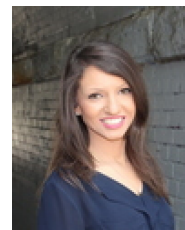
Double brick & quality building
Spacious, light filled open plan living & dining area w/ air-conditioning
West facing entertainers balcony
Modern gas kitchen w/ s/steel appliances

[For full version visit the website](https://www.beaumccaffery.com.au)

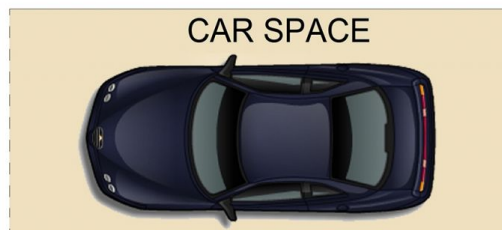
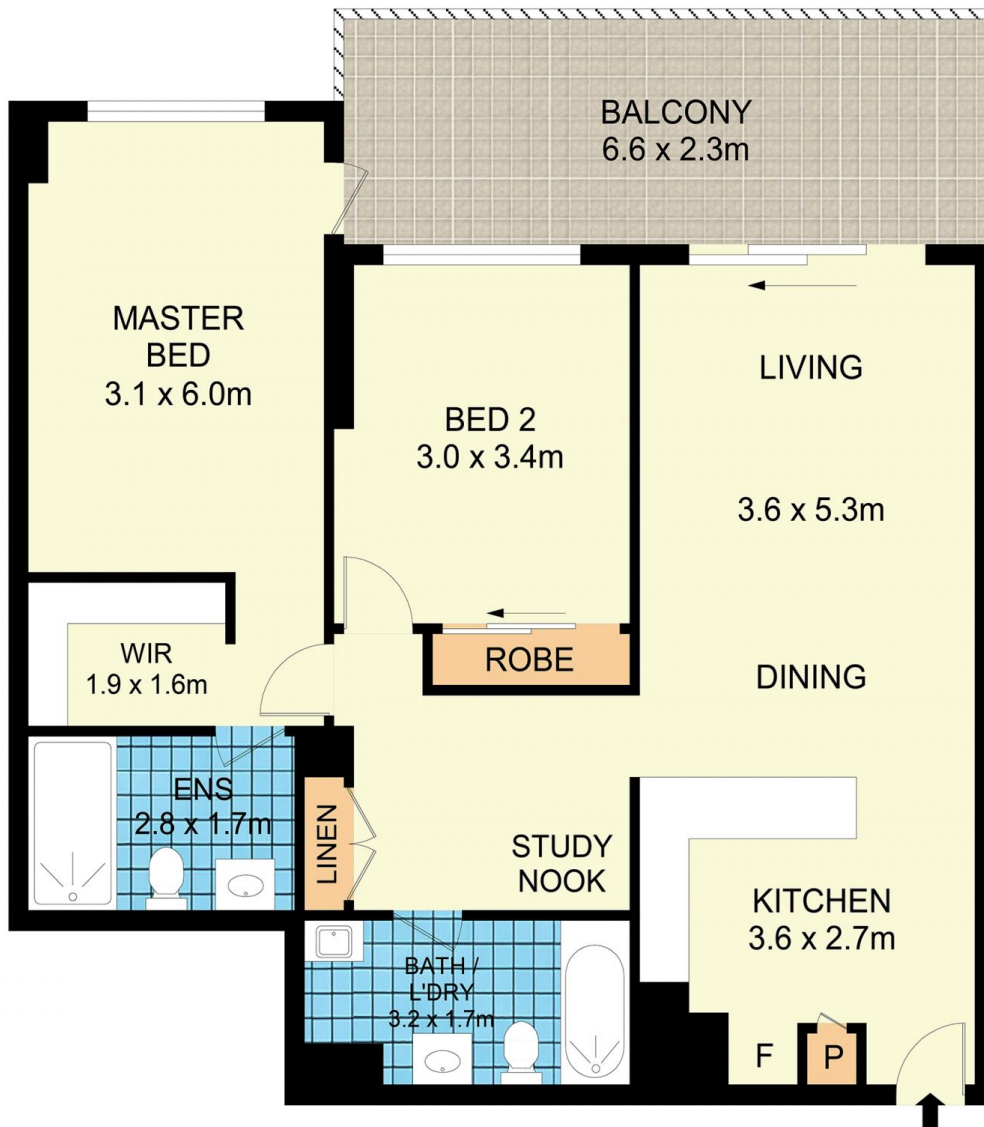
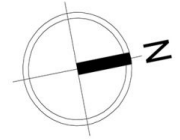
Type : Apartment
Price : \$ 1,200,000
Land Size : 109 sqm
View : <https://www.beaumccaffery.com.au/775340>
0



Melissah McCaffery J P
02 9565 5333



Rebecca Voncina
02 9565 5333



14404/177-219 Mitchell Road, Erskineville

Disclaimer

Floor Plan measurements are approximate and are for illustrative purposes only. While we cannot doubt the floor plans accuracy, we make no guarantee, warranty or representation as to the accuracy and completeness of the floor plan