

**6306/177-219 Mitchell Road Erskineville NSW**

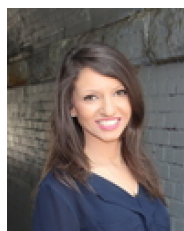
1  1  1 

Nestled discreetly on the fringe of Sydney's inner west, this North facing apartment boasts bright, open-plan living spaces with updated interiors throughout and positioned within an idyllic resort style setting. Exuding a premium ambiance and enviable location, enjoy low-maintenance living and embrace the vibrancy of a community resort lifestyle.

**Type** : Apartment  
**Price** : \$ 715,000  
**Building Size** : 81 sqm  
**Land Size** : 81 sqm  
**View** : <https://www.beaumccaffery.com.au/7786653>

Double brick & quality building  
 Generous, light filled open plan living & dining area  
 North facing balcony  
 Well-appointed gas kitchen w/ quality appliances (no separate gas bill in this strata plan)  
 Expansive master bedroom w/ walk-in-robe  
 Main bathroom w/ bathtub, separate laundry & linen

[For full version visit the website](https://www.beaumccaffery.com.au)



**Rebecca Voncina**  
02 9565 5333



**Melissah McCaffery J P**  
02 9565 5333



6306/177-219 Mitchell Road, Erskineville

**Disclaimer**

Floor Plan measurements are approximate and are for illustrative purposes only. While we cannot doubt the floor plans accuracy, we make no guarantee, warranty or representation as to the accuracy and completeness of the floor plan