



2206/177-219 Mitchell Road Erskineville NSW

1  1  1 

Designed for entertainers, this apartment offers immense privacy w/ a unique statement of scale and wow factor. Nestled amid the lush-green surrounds of Sydney Park Village, this courtyard apartment has a generous floor plan & expansive outdoor area perfect for entertaining. Soaking up the village ambience of Erskineville's vibrant urban shopping, café and dining precinct, this apartment is the perfect introduction into Sydney's sophisticated city fringe lifestyle - the ideal first home or lucrative investment for the savvy opportunist.

Double brick & quality building
In/outdoor living & dining w/ hard flooring
Floor to ceiling glass sliding doors enabling an abundance of natural light

[For full version visit the website](https://www.beaumccaffery.com.au)

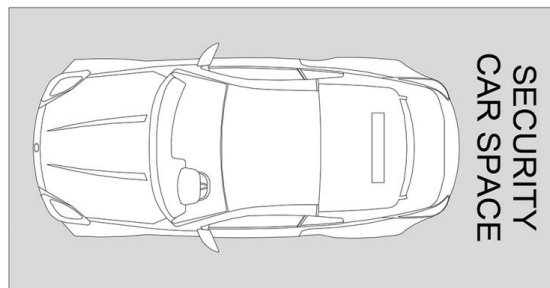
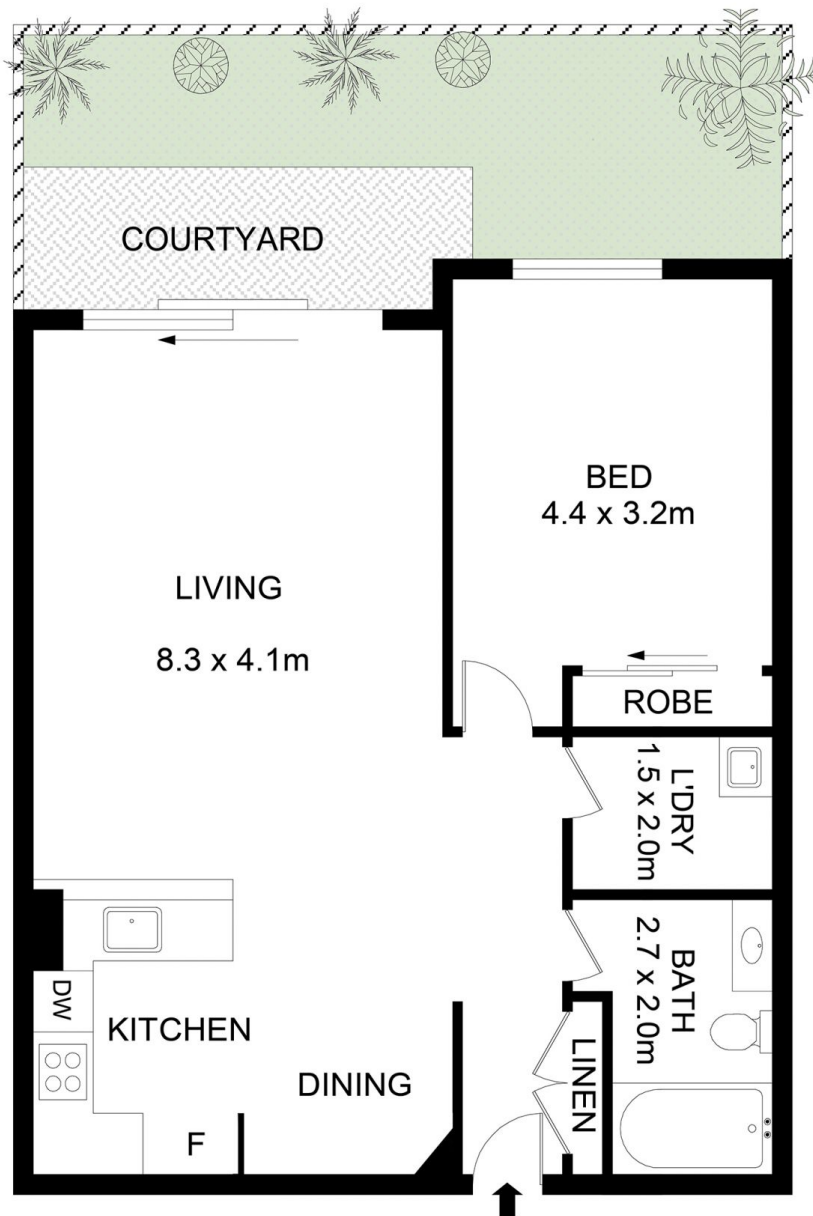
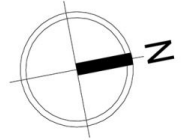
Type : Apartment
Price : \$ 800,000
Land Size : 90 sqm
View : <https://www.beaumccaffery.com.au/802543>
4



Melissah McCaffery J P
02 9565 5333



Michael McCaffery
02 9565 5333



2206/177-219 Mitchell Road, Erskineville

Disclaimer

Floor Plan measurements are approximate and are for illustrative purposes only. While we cannot doubt the floor plans accuracy, we make no guarantee, warranty or representation as to the accuracy and completeness of the floor plan