



17512/177-219 Mitchell Road Erskineville NSW

1  1 

Situated in the sought-after landmark 'Sydney Park Village' is this bright & spacious internal facing apartment featuring an open plan layout w/ views over the landscaped gardens, swimming pools and tennis courts. Immerse yourself in an effortless urban lifestyle, perfect for the savvy investor or couple that demands quality without compromise.

Type : Apartment
Price : \$ 680,000
Building Size : 65 sqm
View : <https://www.beaumccaffery.com.au/8031439>

Double brick & quality building
 Floor to ceiling glass sliding doors enabling an abundance of natural light
 Spacious open plan lounge & dining area
 Large bedroom w/ walk in robe & direct balcony access
 Designer gas kitchen w/ dishwasher & breakfast bar
 Stylish bathroom w/ tub & internal laundry w/ dryer
 Full width entertainers' balcony w/ leafy outlook & complex

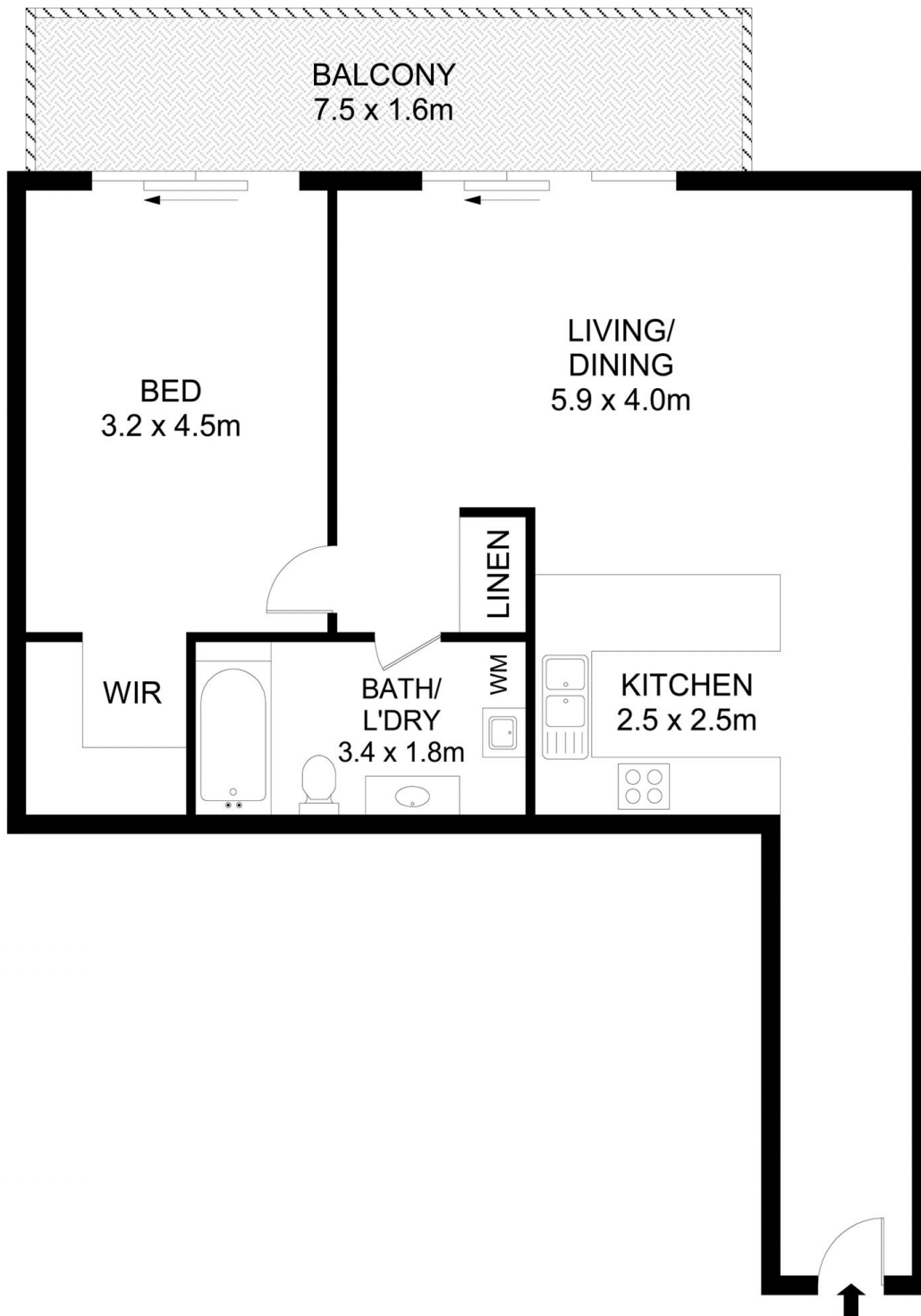


Michael McCaffery
02 9565 5333



Melissah McCaffery J P
02 9565 5333

[For full version visit the website](https://www.beaumccaffery.com.au)



17512/177-219 Mitchell Road, Erskineville

Disclaimer

Floor Plan measurements are approximate and are for illustrative purposes only. While we cannot doubt the floor plans accuracy, we make no guarantee, warranty or representation as to the accuracy and completeness of the floor plan

