



6206/177-219 Mitchell Road Erskineville NSW

2  2  1 

Situated in the front stage of the development & boasting a 10m wide frontage, this apartment delivers endless lifestyle appeal in a vibrant resort-style setting. Presenting an open plan layout w/ light filled & updated interiors throughout, enjoy low maintenance living coupled with Inner Wests most coveted conveniences - the ideal sanctuary for young couples, families or downsizers looking for effortless living in a tightly held resort style community.

Double brick & quality building
Large in/outdoor living area which flows seamlessly into the spacious courtyard
Floor to ceiling glass sliding doors enabling an abundance of light
Renovated gas kitchen w/ s/s appliances & loads of

[For full version visit the website](https://www.beaumccaffery.com.au)

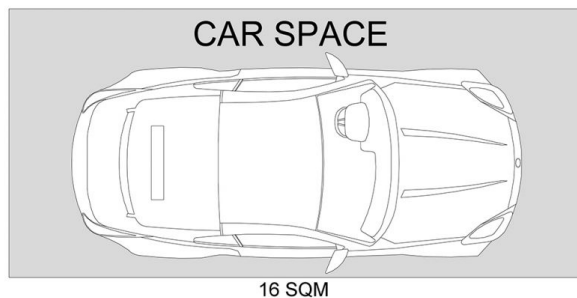
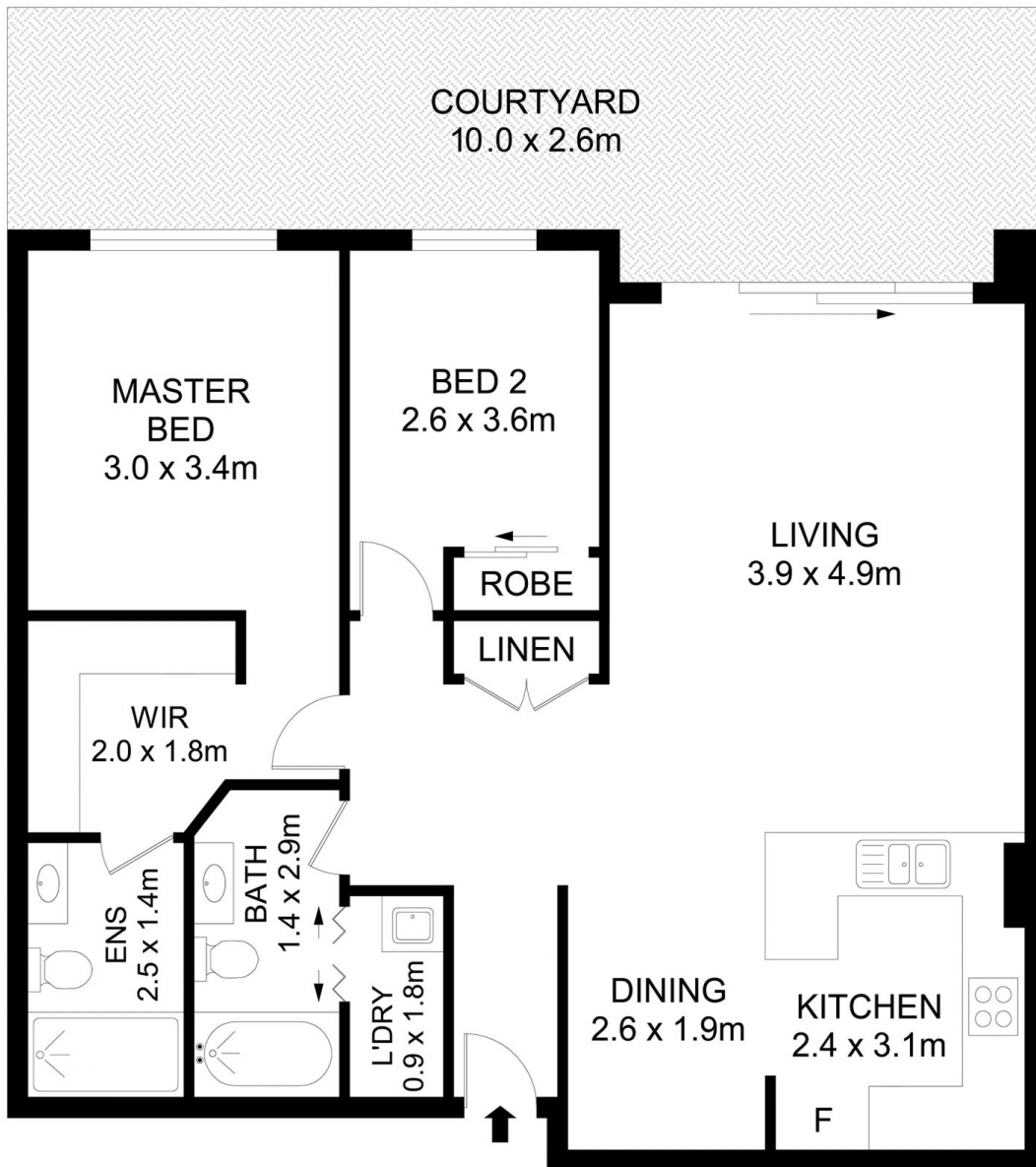
Type : Apartment
Price : \$ 1,165,000
Land Size : 117 sqm
View : <https://www.beaumccaffery.com.au/8035462>



Melissah McCaffery J P
02 9565 5333



Michael McCaffery
02 9565 5333



Disclaimer

Floor Plan measurements are approximate and are for illustrative purposes only. While we cannot doubt the floor plans accuracy, we make no guarantee, warranty or representation as to the accuracy and completeness of the floor plan

