




84/2 Coulson Street Erskineville NSW

2  2  1 

Situated in the highly desirable Verve complex, exuding sophistication & privacy amongst the urban surroundings of Erskineville. This apartment offers modern interiors & quality finishes. This sleek abode is the perfect opportunity to secure a first home or investment property all within a well maintained boutique complex - this home ticks every box.

Type : Apartment
Price : \$ 1,280,000
Building Size : 109 sqm
Land Size : 109 sqm
View : <https://www.beaumccaffery.com.au/8049073>

Double brick & quality building
 Spacious, light filled open plan living & dining area w/ air-conditioning
 Modern gas kitchen w/ Caesar stone benches & SMEG appliances
 Undercover East facing balcony w/ park views
 Master bedroom w/ private leafy outlook, BIR & ensuite

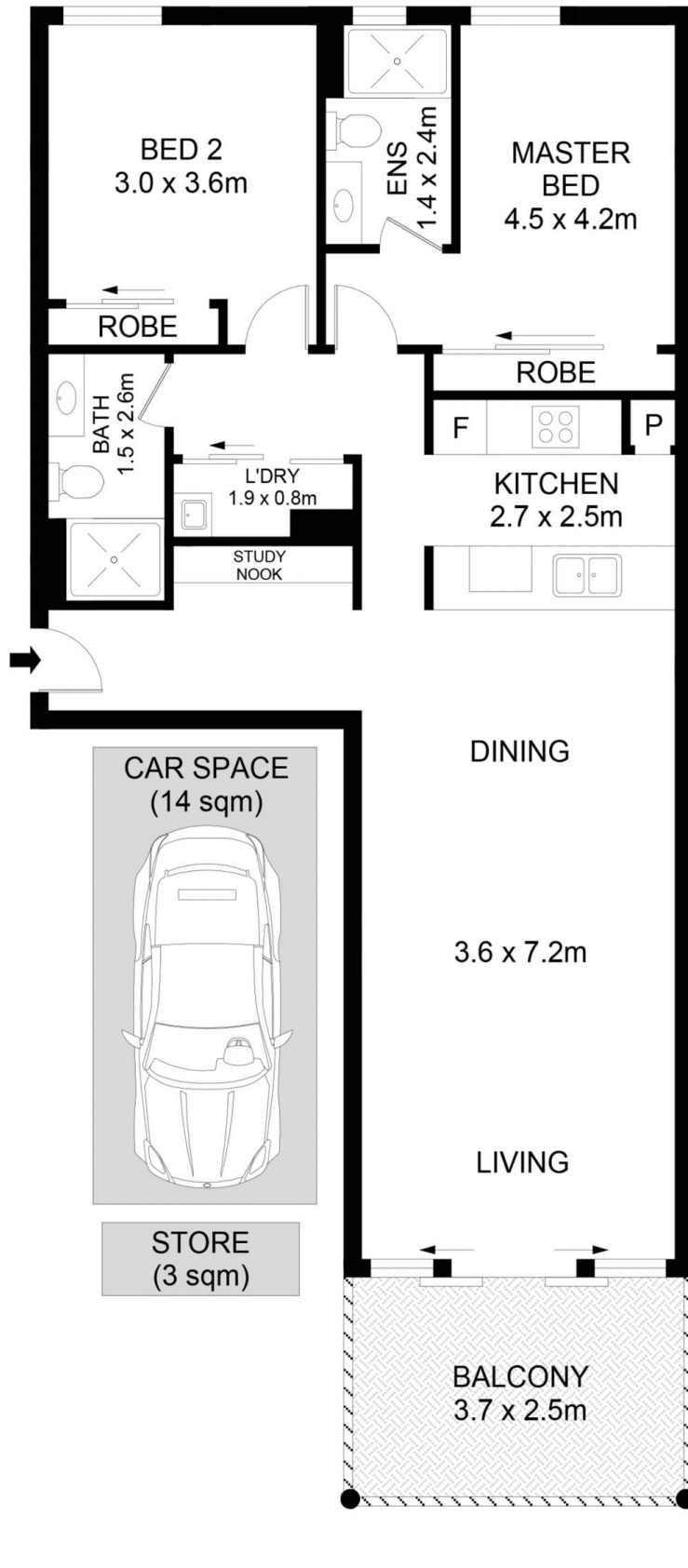
[For full version visit the website](https://www.beaumccaffery.com.au)



Melissah McCaffery J P
02 9565 5333



Michael McCaffery
02 9565 5333



84/2 Coulson Street, Erskineville



Disclaimer

Floor Plan measurements are approximate and are for illustrative purposes only. While we cannot doubt the floor plans accuracy, we make no guarantee, warranty or representation as to the accuracy and completeness of the floor plan.