

32/20 Eve Street Erskineville NSW

1  1 

Located in one of Erskineville's most desirable developments, this apartment presents the ideal lifestyle. Flooded w/ natural light & a tranquil internal aspect overlooking the gardens & water feature, boasting a spacious open-plan layout complemented by quality finishes, indulge in resort-style living w/ serene gardens, an indoor heated pool & gym. Only moments from the vibrant culture of Erko Village & Newtown's King Street - the perfect home or lucrative investment.

Type : Apartment
Price : \$ 700,000
Building Size : 70 sqm
Land Size : 70 sqm
View : <https://www.beaumccaffery.com.au/8050342>

Small boutique quality building
 Spacious open plan living & dining area w/ air conditioning
 Floor to ceiling glass sliding pocket doors enabling an abundance of natural light
 Modern kitchen w/ stainless steel appliances & loads of

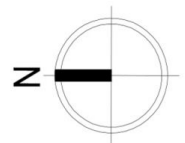
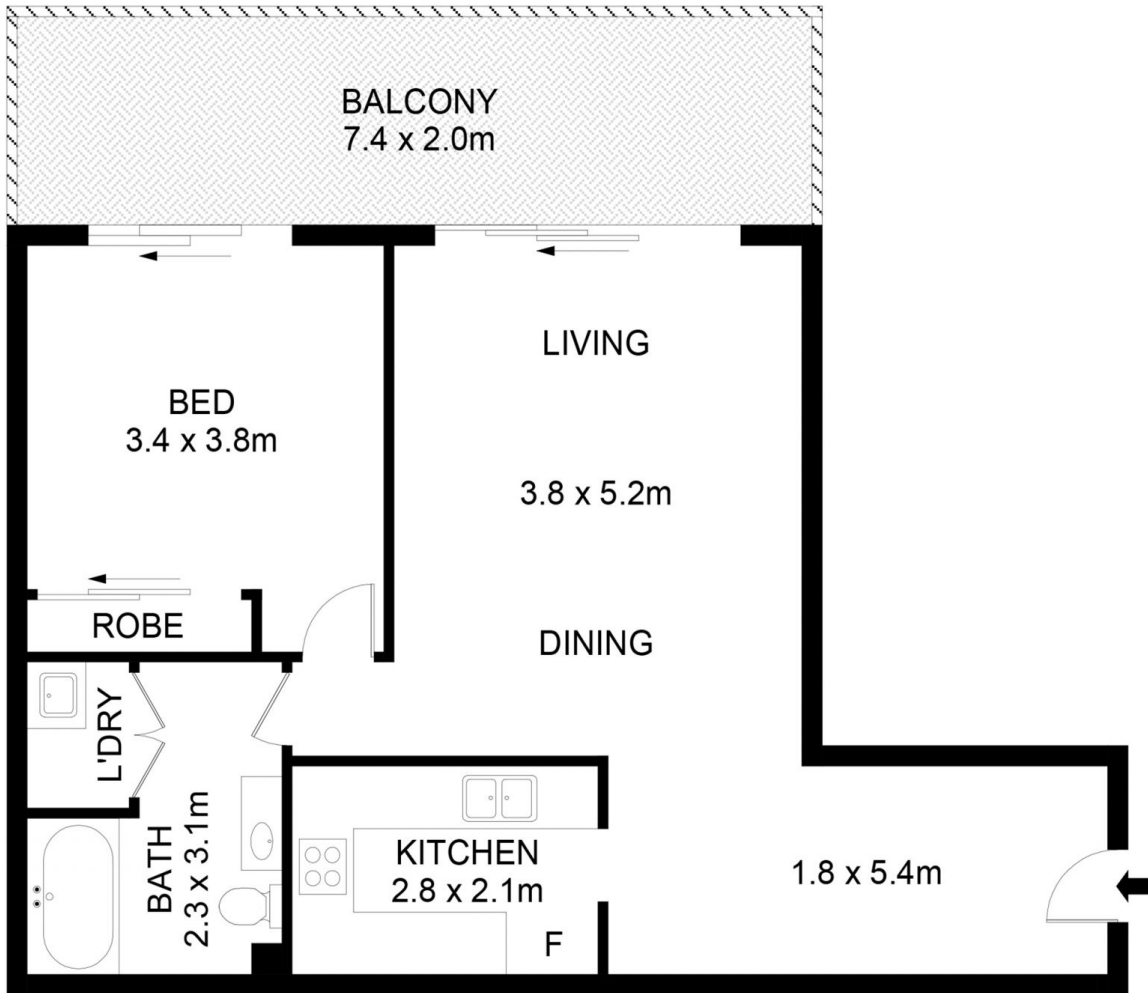


Melissah McCaffery J P
02 9565 5333



Michael McCaffery
02 9565 5333

[For full version visit the website](https://www.beaumccaffery.com.au)



32/20 Eve Street, Erskineville



Disclaimer

Floor Plan measurements are approximate and are for illustrative purposes only. While we cannot doubt the floor plans accuracy, we make no guarantee, warranty or representation as to the accuracy and completeness of the floor plan.