



18508/177-219 Mitchell Road Erskineville NSW

2  2  2 

Highly prized for its corner aspect, this spacious 143 sqm two bedroom + study apartment is arguably one of the best floor plans in Sydney Park Village. Featuring light filled, wide open plan living & dining spaces w/ separated bedrooms/bathrooms, combined w/ contemporary appointments throughout & city views. Enjoy the convenience of two secure parking spots & easy access to inner west amenities, including multiple transport options at your doorstep. Enjoy low maintenance living coupled w/ exquisite resort style facilities in lush green surrounds - this is the perfect first start, downsize or lucrative investment.

Double brick & quality building
Floor to ceiling glass sliding doors enabling an abundance of natural light

[For full version visit the website](https://www.beaumccaffery.com.au)

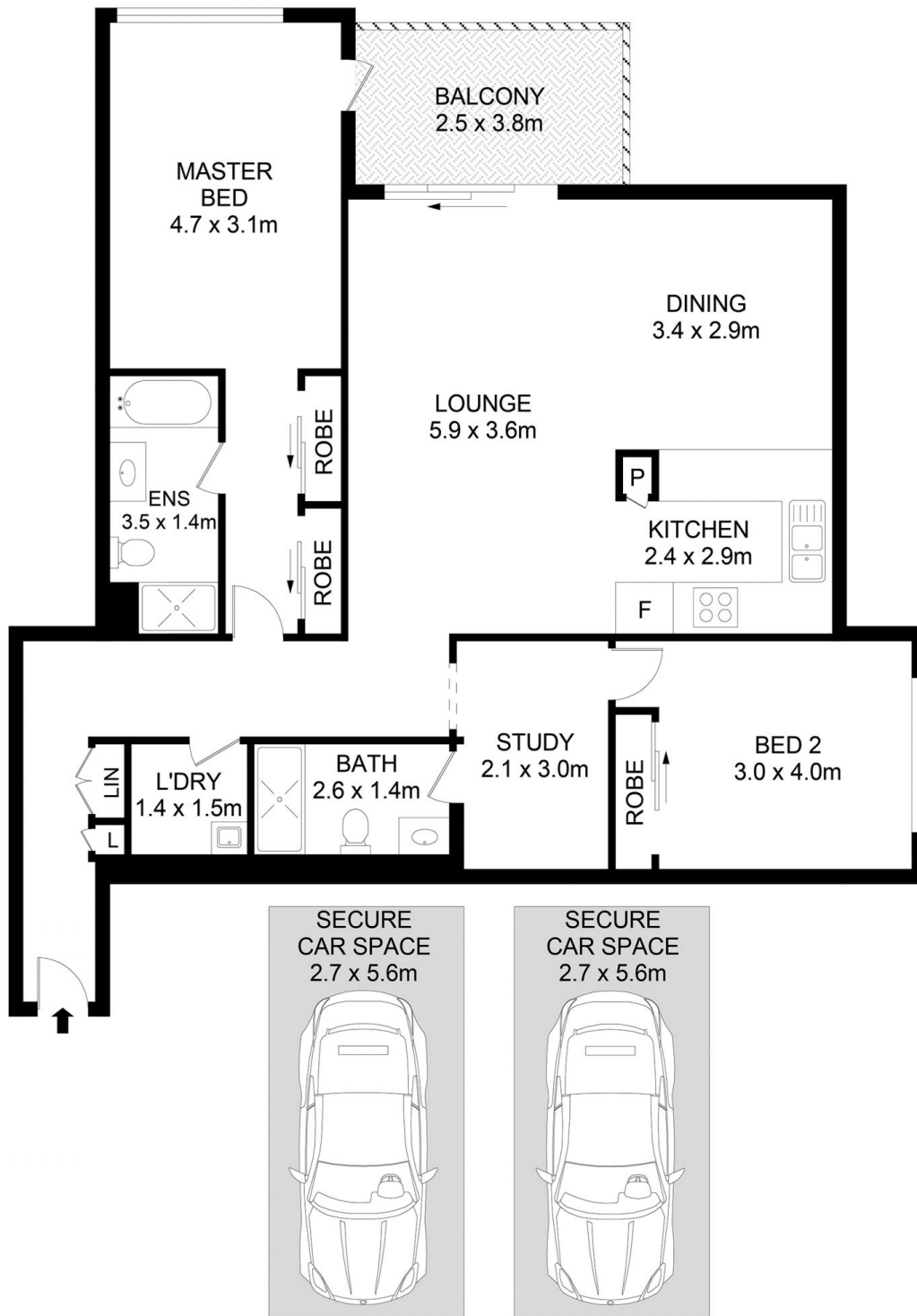
Type : Apartment
Price : \$ 1,355,000
Building Size : 143 sqm
Land Size : 143 sqm
View : <https://www.beaumccaffery.com.au/8056789>



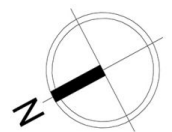
Melissah McCaffery J P
02 9565 5333



Michael McCaffery
02 9565 5333



LEVEL 4



18508/177-219 Mitchell Road, Erskineville 0 1 2 5

Disclaimer

Floor Plan measurements are approximate and are for illustrative purposes only. While we cannot doubt the floor plans accuracy, we make no guarantee, warranty or representation as to the accuracy and completeness of the floor plan