

7303/177-219 Mitchell Road Erskineville NSW

2 🛏 2 🚿 1 🚗

Located within the highly regarded resort style complex 'Sydney Park Village', this sophisticated single level design has been revamped & features light filled open plan spaces - It's prime inner west location makes it the perfect home or investment purchase.

Double brick & quality building
Oversized open plan living & dining area w/floor-to-ceiling glass & air con
Covered balcony w/ internal complex views
Renovated gas kitchen w/ breakfast bar, s/steel appliances & plenty of storage
Updated flooring, lights & paint throughout
Main bedroom w/ walk in robe & ensuite
Spacious second bedroom w/ BIR

Type : Apartment
Price : \$ 1,050,000
Building Size : 114 sqm
Land Size : 114 sqm
View : <https://www.beaumccaffery.com.au/8145336>

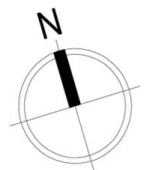
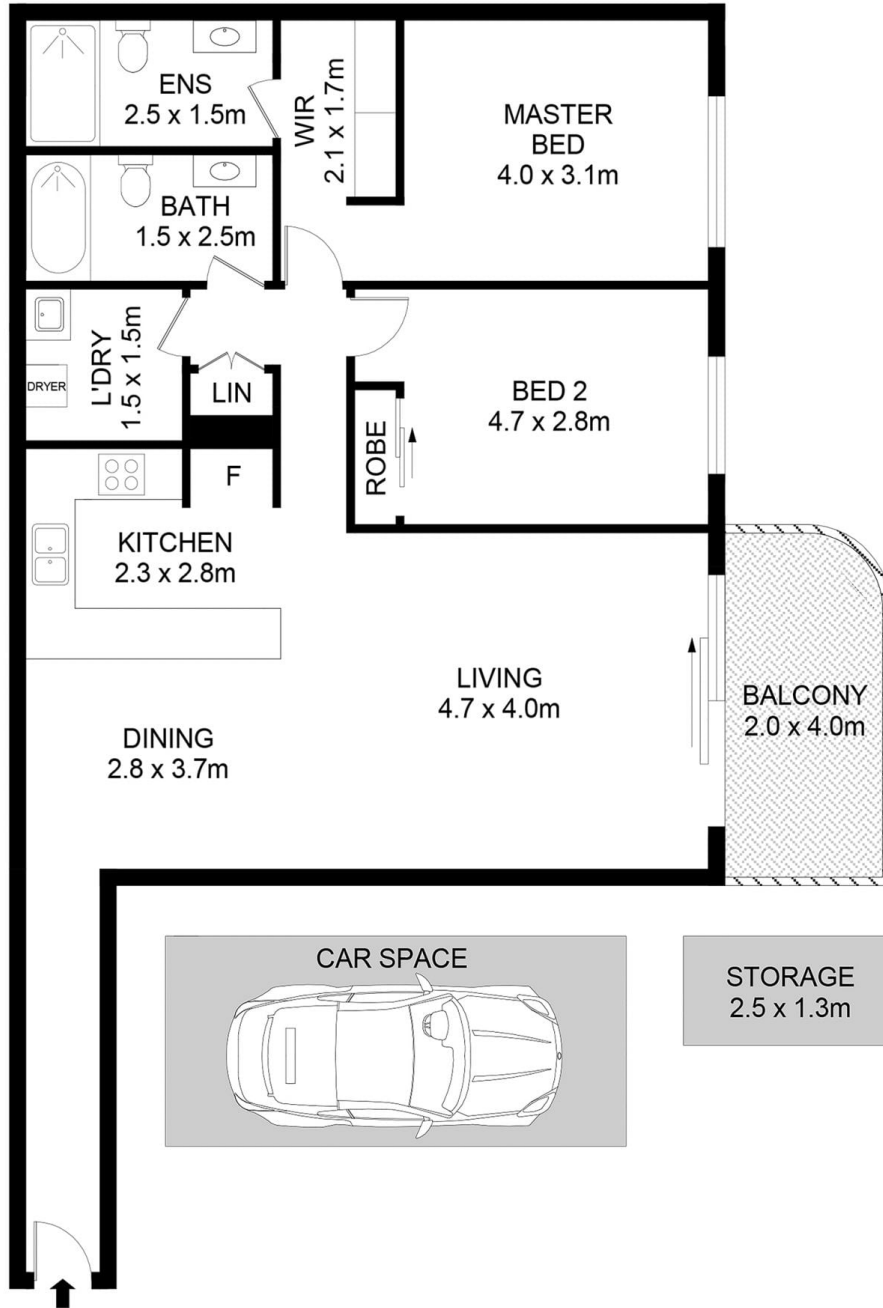


Melissah McCaffery J P
02 9565 5333



Michael McCaffery
02 9565 5333

[For full version visit the website](https://www.beaumccaffery.com.au)



7303/177-219 Mitchell Road, Erskineville



Disclaimer

Floor Plan measurements are approximate and are for illustrative purposes only. While we cannot doubt the floor plans accuracy, we make no guarantee, warranty or representation as to the accuracy and completeness of the floor plan