



**18503/177-219 Mitchell Road Erskineville NSW**

2  2  1 

Generous in size and features, this two bedroom apartment boasts light filled, oversized living. Situated in the highly sought after Sydney Park Village complex, it offers a versatile floor plan with stylish finishes.

Double brick & quality building  
Oversized light filled living & dining area w/ floor-to-ceiling glass & air con  
Full length entertainers balcony, perfect for entertaining  
Gas kitchen w/ stainless steel appliances  
Oversized main bedroom w/ walk in robe, ensuite & balcony access  
Spacious second bedroom w/ built-in robes  
Stylish bathrooms & separate laundry  
Study alcove

[For full version visit the website](https://www.beaumccaffery.com.au)

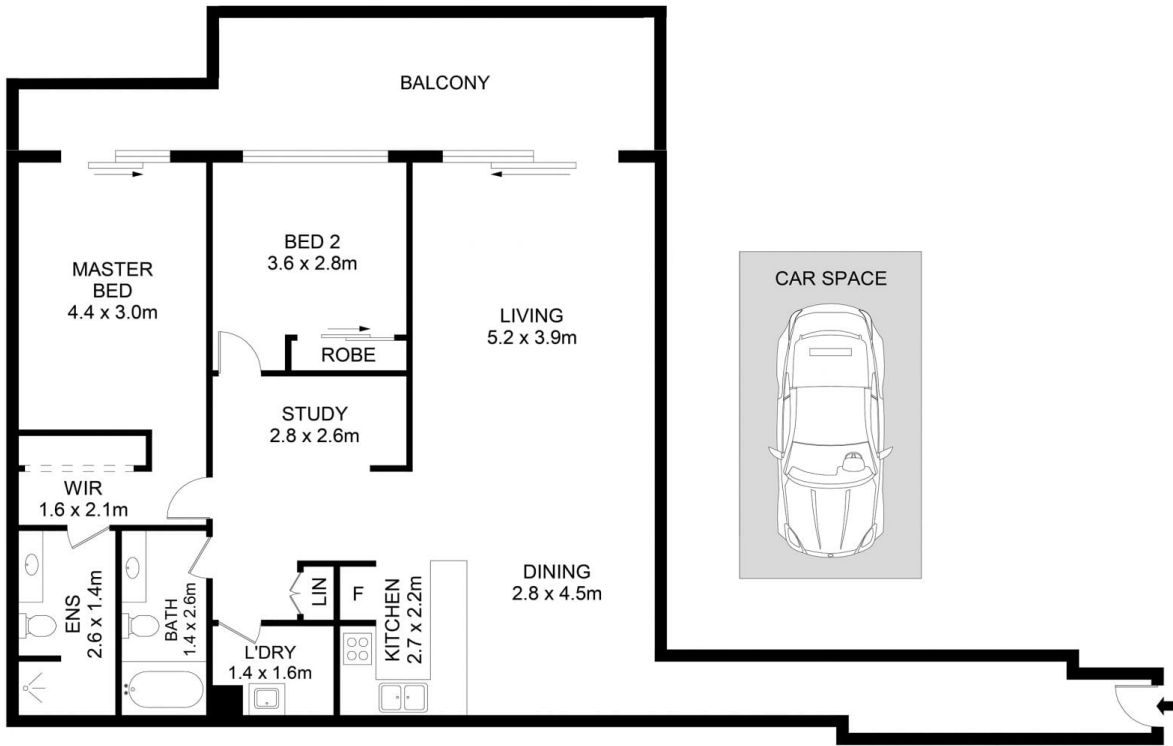
**Type** : Apartment  
**Price** : \$ 1,462,000  
**Building Size** : 133 sqm  
**Land Size** : 133 sqm  
**View** : <https://www.beaumccaffery.com.au/8168193>



**Melissah McCaffery J P**  
02 9565 5333



**Michael McCaffery**  
02 9565 5333



18503/177-219 Mitchell Road, Erskineville

Disclaimer

Floor Plan measurements are approximate and are for illustrative purposes only. While we cannot doubt the floor plans accuracy, we make no guarantee, warranty or representation as to the accuracy and completeness of the floor plan

