



**309/1 Pearl Street Erskineville NSW**

1  1 

With a premier North position of the award-winning Erko complex designed by SJB, this apartment enjoys an expansive open plan design w/ bespoke interiors & impressive floor to ceiling glass doors to maximise the views & natural light in every room. Enjoy picturesque views from every room & privacy within a vibrant community - an idyllic oasis for relaxation. Erko is renowned for its quality design, community spirit & green credentials in a prized location 500m to the cafe-lined high street, artisan bakeries, wine bars & beer gardens.

Sunlit open plan living & dining  
North facing entertainers' terrace w/ sweeping North city & district views  
Designer gas kitchen w/ stone benchtop & Smeg

[For full version visit the website](https://www.beaumccaffery.com.au)

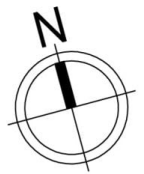
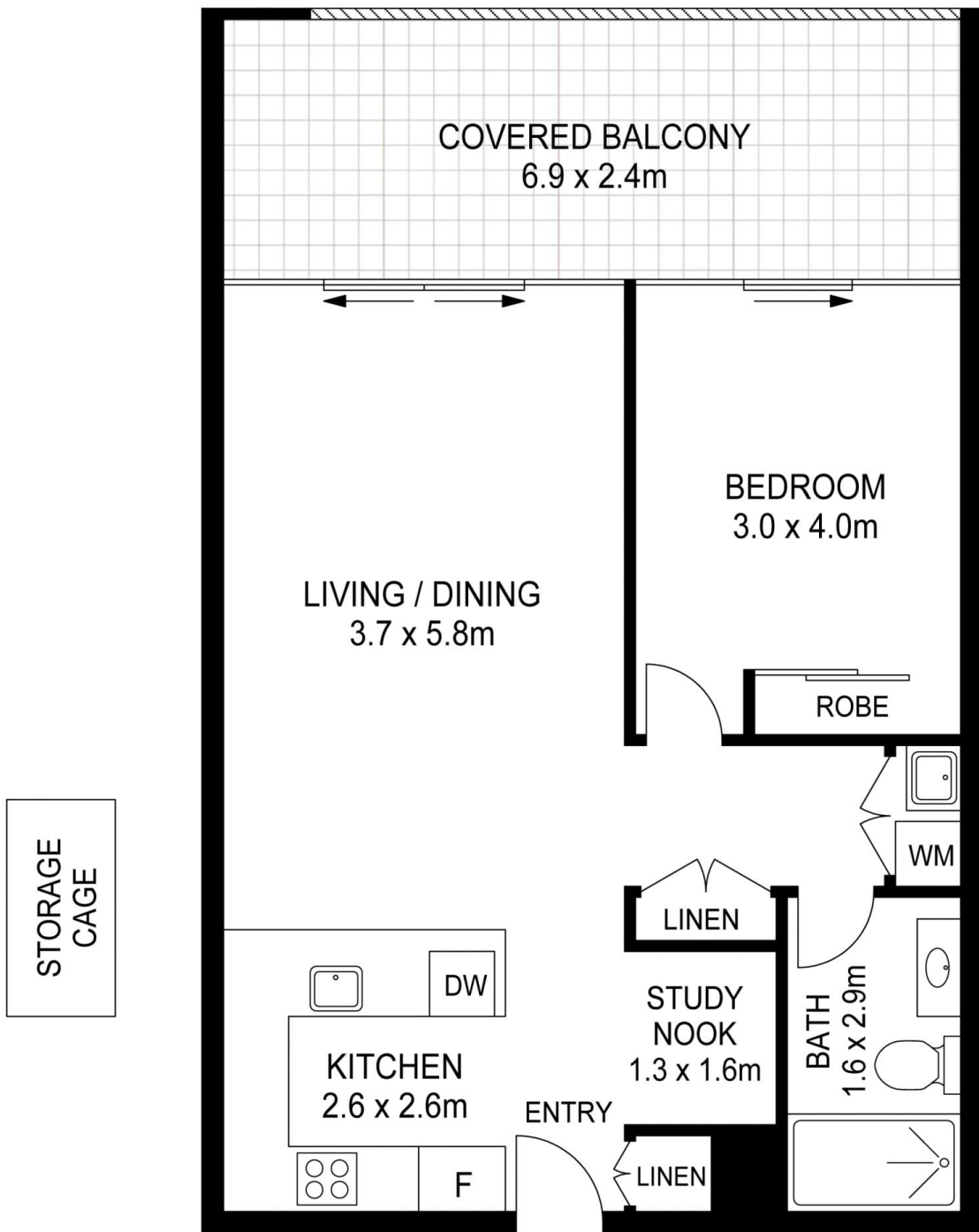
**Type** : Apartment  
**Price** : \$ 835,000  
**Building Size** : 72 sqm  
**Land Size** : 72 sqm  
**View** : <https://www.beaumccaffery.com.au/8168259>



**Melissah McCaffery J P**  
02 9565 5333



**Michael McCaffery**  
02 9565 5333



## C309 / 1 Pearl Street, Erskineville

### Disclaimer

Floor plan measurements are approximate and are for illustrative purposes only. While we cannot doubt the floor plans accuracy, we make no guarantee, warranty or representation as to the accuracy and completeness of the floor plan