



**11303/177-219 Mitchell Road Erskineville NSW**

2  2  1 

Situated in the sought-after landmark 'Sydney Park Village', this apartment features a private aspect w/ desirable lush green outlook to the park & offers generous living spaces + renovated features. Step into a convenient urban position in a sought-after location, so close to Erko village life & the CBD. Enjoying an in/out-door flow that allows for relaxation or entertaining; the ideal sanctuary for low-maintenance living in a tightly held resort style community. Surrounded by pocket parks, cafes & pathway access to Sydney Park, it's move-in ready - enjoy the community lifestyle & walk everywhere convenience.

Double brick & quality building  
Floor to ceiling glass sliding doors  
Large open plan lounge & dining area w/ air conditioning

[For full version visit the website](https://www.beaumccaffery.com.au)

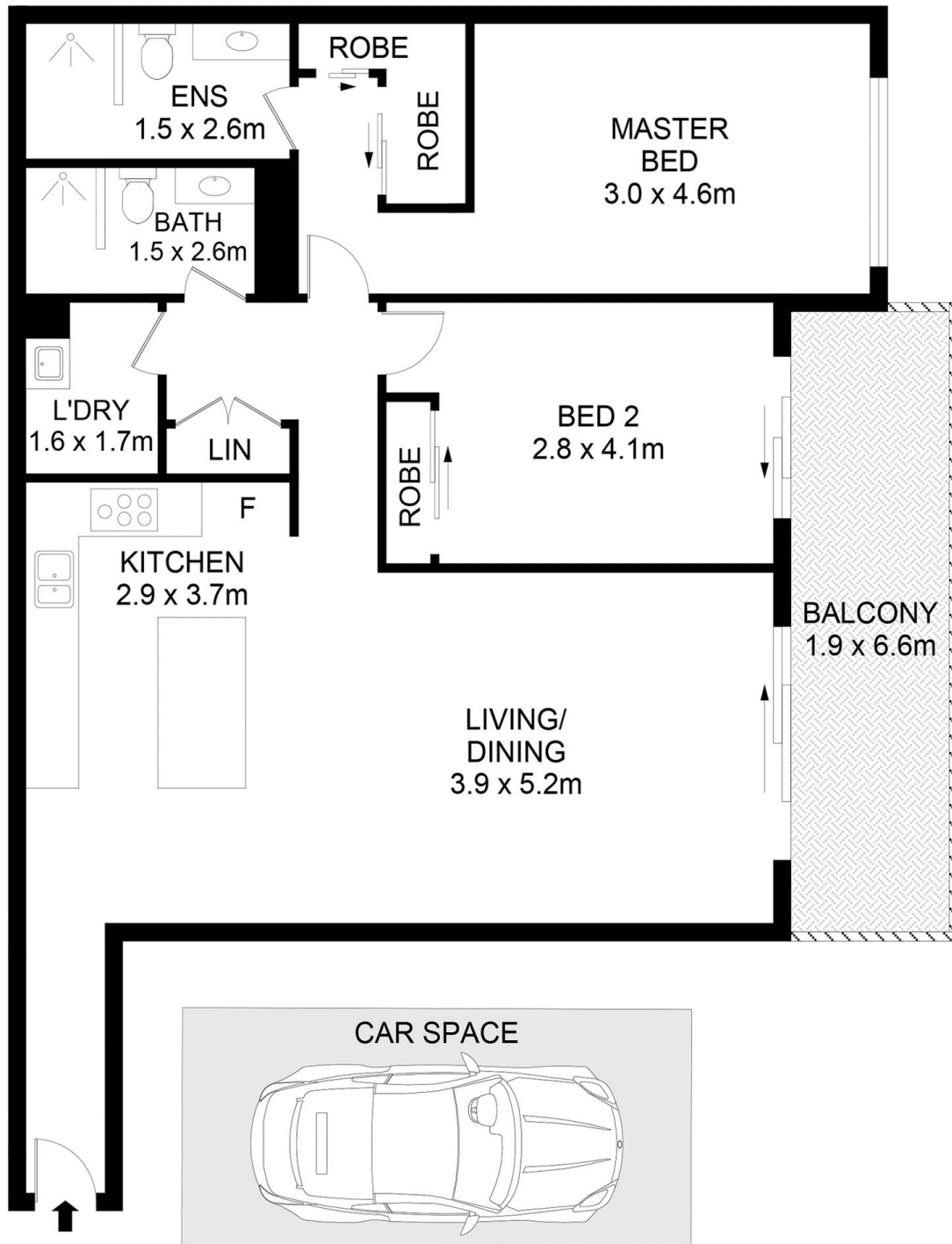
**Type** : Apartment  
**Price** : \$ 1,030,000  
**Building Size** : 118 sqm  
**Land Size** : 118 sqm  
**View** : <https://www.beaumccaffery.com.au/8244386>



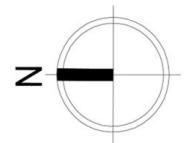
**Melissah McCaffery J P**  
02 9565 5333



**Michael McCaffery**  
02 9565 5333



11303/177-213 Mitchell Road, Erskineville



**Disclaimer**

Floor Plan measurements are approximate and are for illustrative purposes only. While we cannot doubt the floor plans accuracy, we make no guarantee, warranty or representation as to the accuracy and completeness of the floor plan