



15208/177-219 Mitchell Road Erskineville NSW

1  1  1 

Positioned in a highly prized setting & complemented w/ resort-style amenities, this apartment boasts a wide, spacious, open plan design w/ light filled modern interiors throughout. Featuring a wide design w/ an internal facing full width terrace & private outlook w/ views overlooking the complex grounds, manicured gardens, tennis courts & pool - this is the perfect first start, downsize or lucrative investment.

Double brick & quality building
 Floor to ceiling glass sliding doors enabling an abundance of natural light
 Spacious, light filled open plan living & dining area
 East facing, full-width balcony w/ impressive outlook over the complex grounds

[For full version visit the website](https://www.beaumccaffery.com.au)

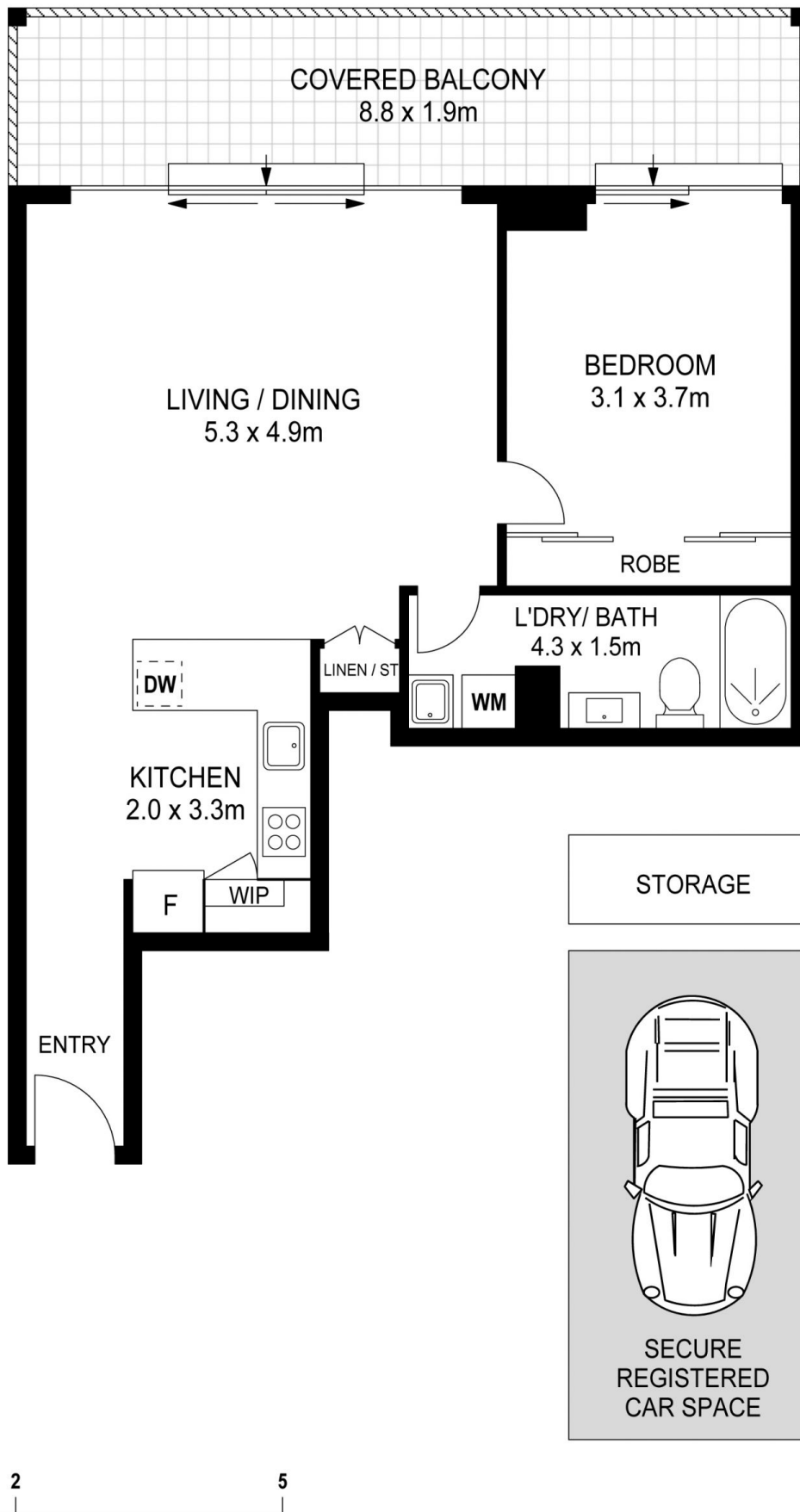
Type : Apartment
Building Size : 88 sqm
Land Size : 88 sqm
View : <https://www.beaumccaffery.com.au/8274870>



Melissah McCaffery J P
 02 9565 5333



Michael McCaffery
 02 9565 5333



15208 / 177 - 219 Mitchell Road, Erskineville

Disclaimer

Floor plan measurements are approximate and are for illustrative purposes only. While we cannot doubt the floor plans accuracy, we make no guarantee, warranty or representation as to the accuracy and completeness of the floor plan