

17111/177-219 Mitchell Road Erskineville NSW

2  2  1 

Nestled in the vibrant heart of Erskineville, this ground floor apartment w/ private courtyard access from the common pathway, seamlessly combines resort-style living w/ urban convenience. Boasting a spacious 134 sqm layout, the home features an open plan living & dining area that flows effortlessly to a private oversized 40 sqm courtyard, perfect for outdoor relaxation & entertaining. Thoughtfully updated w/ modern finishes, the home features two generously sized bedrooms w/ an intelligent design that maximizes light & privacy, creating a serene retreat. Offering low-maintenance living amid the Inner West's most sought-after amenities, this home is the perfect sanctuary for first home buyers, young couples, families, downsizers or investors alike - seeking effortless living in a tightly held resort-style community.

Type : Apartment
Price : \$ 1,360,000
Building Size : 134 sqm
Land Size : 134 sqm
View : <https://www.beaumccaffery.com.au/8291765>

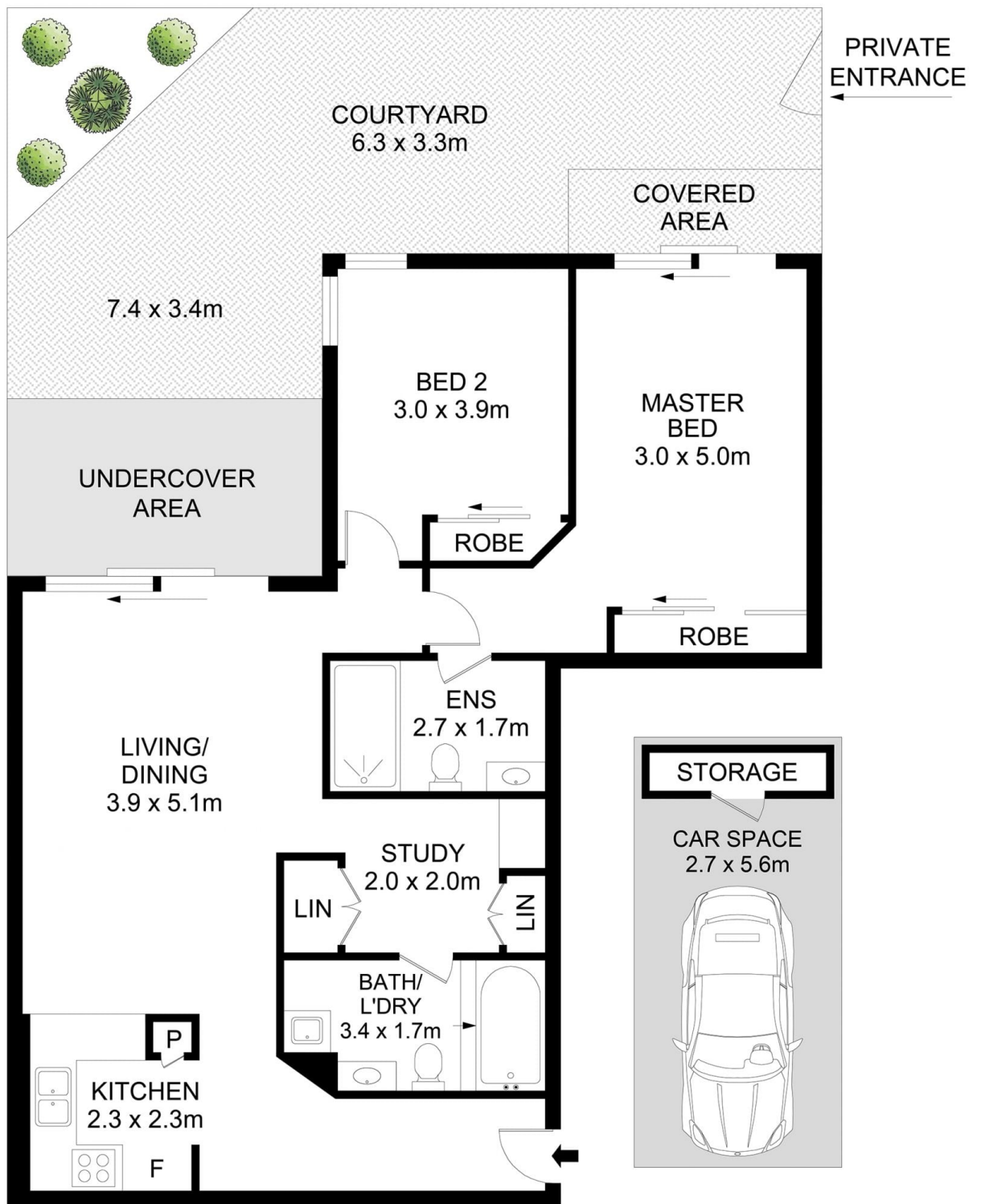


Melissah McCaffery J P
02 9565 5333



Michael McCaffery
02 9565 5333

[For full version visit the website](https://www.beaumccaffery.com.au)



Disclaimer

Floor Plan measurements are approximate and are for illustrative purposes only. While we cannot doubt the floor plans accuracy, we make no guarantee, warranty or representation as to the accuracy and completeness of the floor plan

