



**3408/177-219 Mitchell Road ERSKINEVILLE NSW**

2  2  1 

Perfectly positioned within the highly sought-after Sydney Park Village, this apartment delivers the ideal combination of vibrant urban living and resort-style comfort. Featuring a spacious, light-filled layout, the generously sized living area flows seamlessly to an outdoor space with views over Sydney Park. Well-proportioned bedrooms and air conditioning throughout offer year-round comfort, while the low-maintenance design complements the lifestyle appeal of one of the Inner West's most desirable communities. An ideal haven for young couples, families, or downsizers seeking easy living in a tightly held, resort-style community.

Double brick & quality building  
Floor to ceiling glass sliding doors enabling an abundance of natural light

[For full version visit the website](https://www.beaumccaffery.com.au)

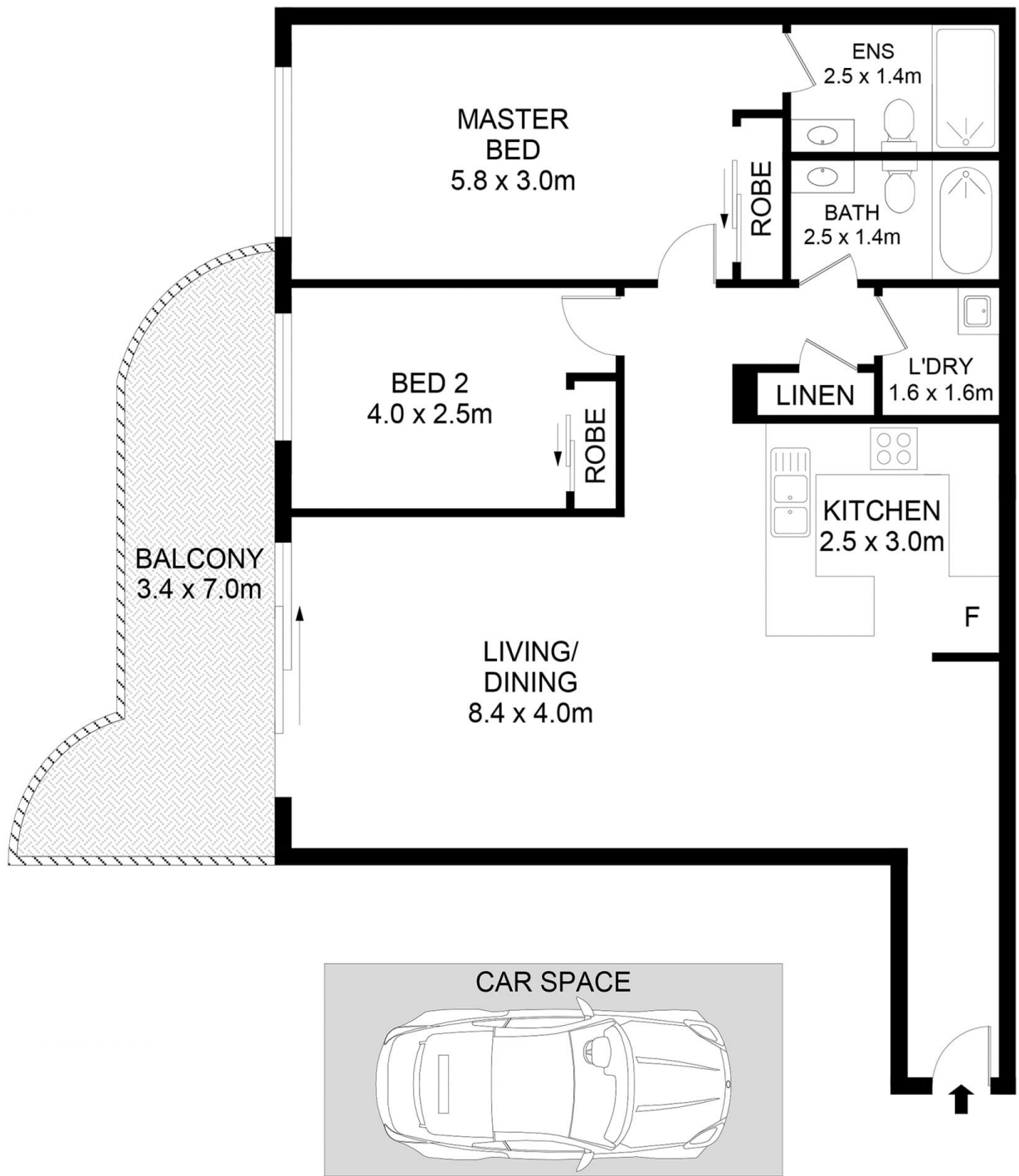
**Type** : Apartment  
**Price** : \$ 1,050,000  
**Building Size** : 112 sqm  
**Land Size** : 112 sqm  
**View** : <https://www.beaumccaffery.com.au/8353095>



**Melissah McCaffery J P**  
02 9565 5333



**Michael McCaffery**  
02 9565 5333



**Disclaimer**

Floor Plan measurements are approximate and are for illustrative purposes only. While we cannot doubt the floor plans accuracy, we make no guarantee, warranty or representation as to the accuracy and completeness of the floor plan

