



10502/177-219 Mitchell Road ERSKINEVILLE NSW

2 🛏 2 🚿 1 🚗

Showcasing one of the most sought-after floorplans in the complex w/ a desirable corner aspect featuring additional windows, this beautifully presented North-West facing apartment is thoughtfully designed w/ light-filled, wide open-plan living & dining areas & the rare advantage of separated bedrooms & bathrooms for enhanced privacy & functionality. Set within the highly desirable Sydney Park Village & surrounded by lush, landscaped grounds, it offers an exceptional opportunity to enjoy resort-style living in the heart of Erskineville. Step inside to a spacious, sunlit lounge & dining space that flows seamlessly to a large entertainer's balcony-ideal for alfresco dining, weekend gatherings, or relaxing w/ peaceful views of the manicured gardens - featuring quality finishes throughout & a smart, functional layout, this home is perfect for families,

Type : Apartment
Price : \$ 1,530,000
Building Size : 122 sqm
Land Size : 122 sqm
View : <https://www.beaumccaffery.com.au/8362753>

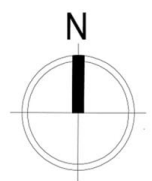
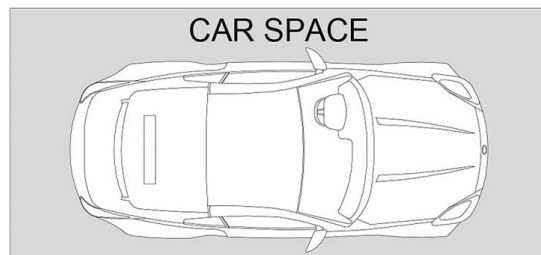
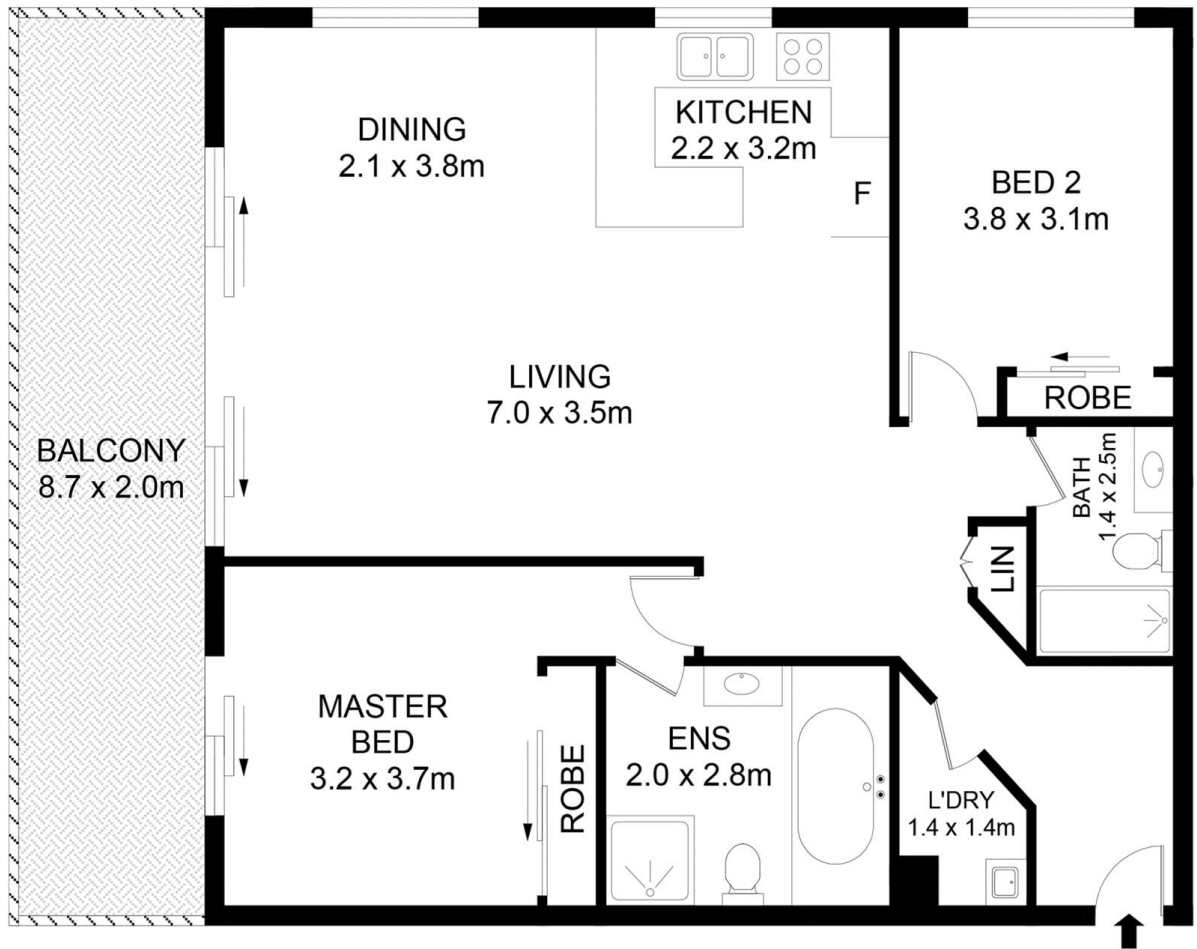


Melissah McCaffery J P
02 9565 5333



Michael McCaffery
02 9565 5333

[For full version visit the website](https://www.beaumccaffery.com.au)



Disclaimer

Floor Plan measurements are approximate and are for illustrative purposes only. While we cannot doubt the floor plans accuracy, we make no guarantee, warranty or representation as to the accuracy and completeness of the floor plan