



**15601/177-219 Mitchell Road ERSKINEVILLE NSW**

1  1  1 

Positioned on the top floor in the newest stage of the development, this sun-soaked east-facing apartment offers an ideal blend of style, functionality, & privacy. Featuring a separate study - perfect for a home office, nursery, banquet seating or library. The apartment showcases updated, light-filled interiors & an open plan lounge & dining area that seamlessly flows onto a balcony w/ peaceful, internal views. Overlooking the beautifully manicured complex grounds, tennis courts & resort-style pool, this residence offers a tranquil, leafy outlook & low-maintenance lifestyle. An ideal opportunity for first home buyers, downsizers, or investors.

Double brick & quality building  
Floor to ceiling glass sliding doors enabling an abundance

**Type** : Apartment  
**Price** : \$ 900,000  
**View** : <https://www.beaumccaffery.com.au/8380822>

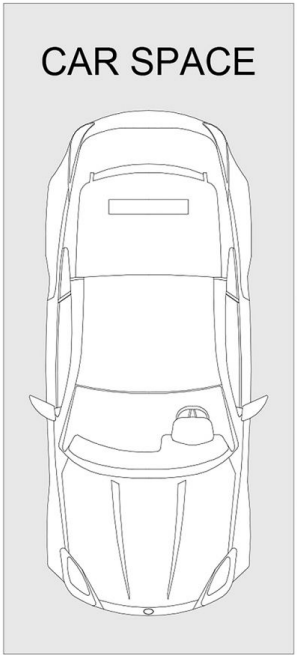
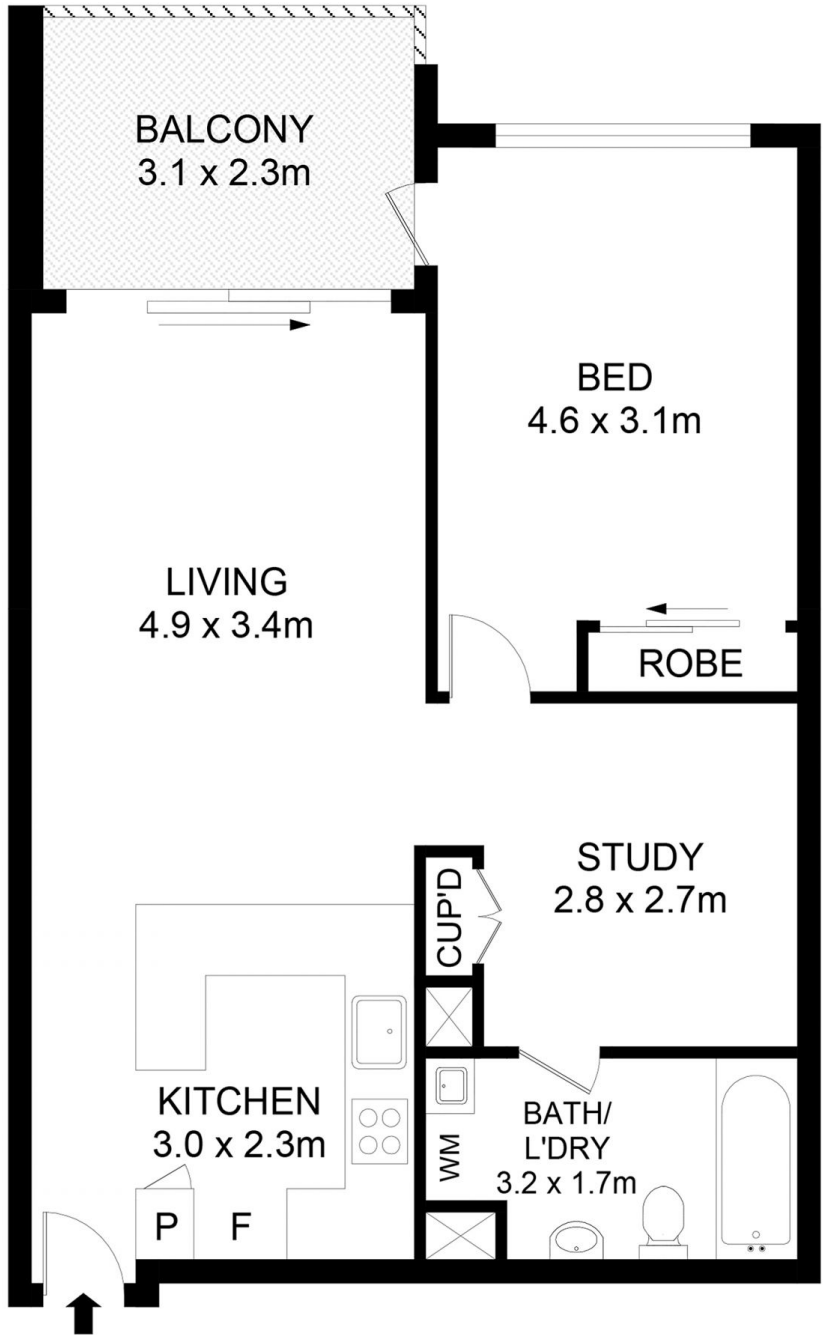


**Michael McCaffery**  
02 9565 5333



**Melissah McCaffery J P**  
02 9565 5333

[For full version visit the website](https://www.beaumccaffery.com.au)



**Disclaimer**

Floor Plan measurements are approximate and are for illustrative purposes only. While we cannot doubt the floor plans accuracy, we make no guarantee, warranty or representation as to the accuracy and completeness of the floor plan

