



**1303/177-219 Mitchell Road ERSKINEVILLE NSW**

1  1  1 

Ideally positioned within the highly sought-after Sydney Park Village, this beautifully updated one bedroom apartment offers a perfect blend of modern style, functional design & relaxed living. Flooded w/ natural light, the spacious open plan lounge & dining area features fresh interiors & flows effortlessly onto a covered balcony - perfect for entertaining. The sleek kitchen, generous bedroom & updated finishes throughout create a warm & welcoming retreat. Set within a vibrant resort-style community w/ lush gardens, pools, gym & tennis courts, this home promises a lifestyle of ease & connection in the heart of Erskineville.

Double brick & quality building  
Floor to ceiling glass sliding doors enabling an abundance

[For full version visit the website](https://www.beaumccaffery.com.au)

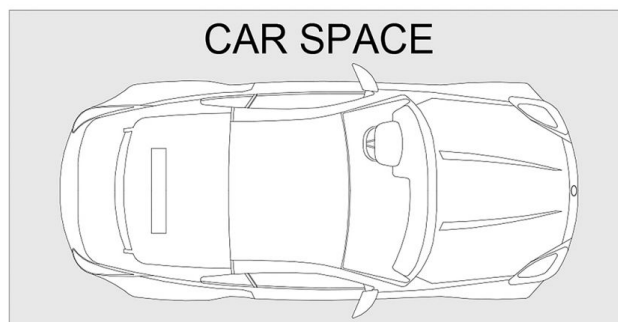
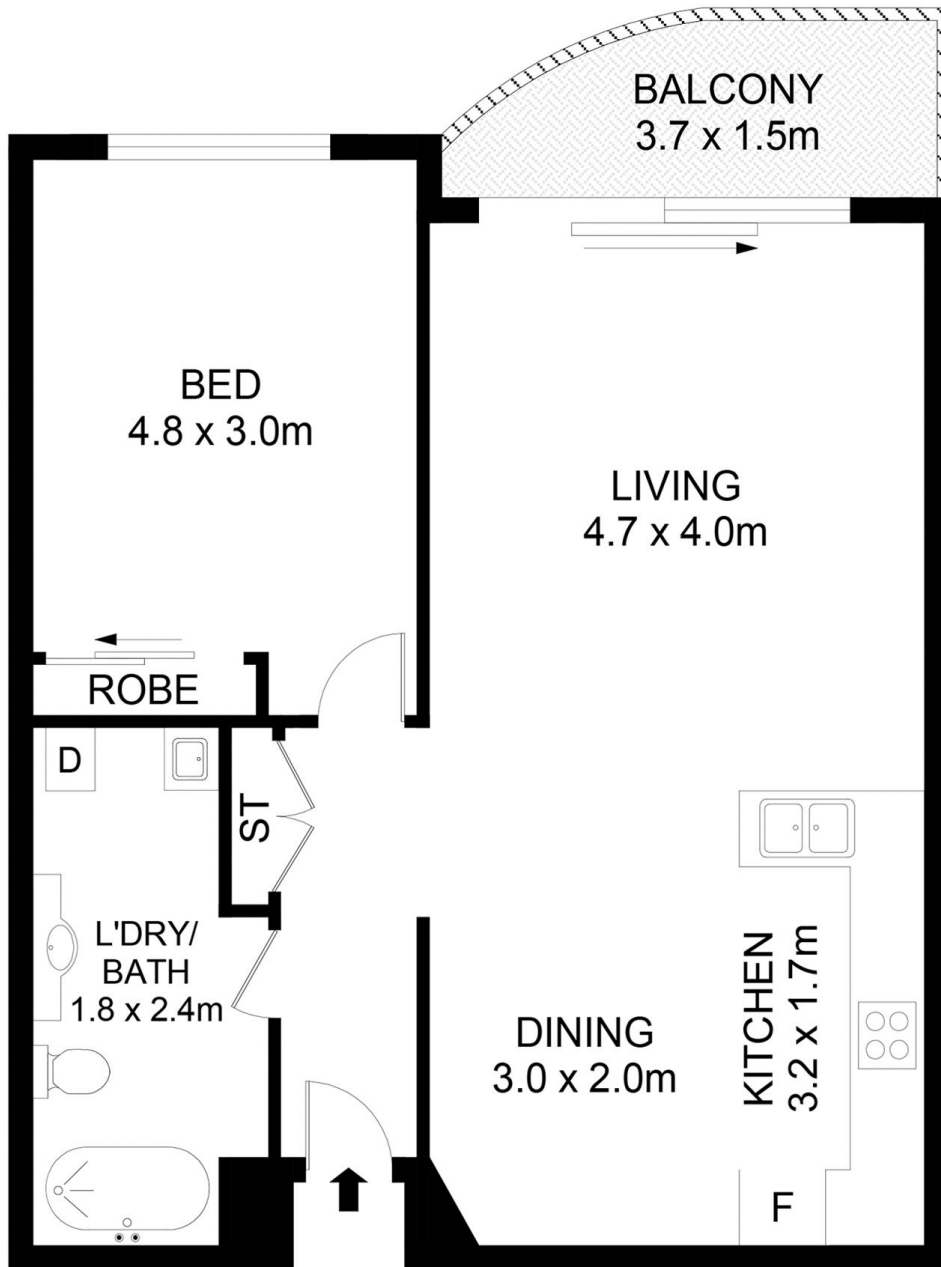
**Type** : Apartment  
**Price** : \$ 820,000  
**Building Size** : 73 sqm  
**Land Size** : 73 sqm  
**View** : <https://www.beaumccaffery.com.au/8397380>



**Melissah McCaffery J P**  
02 9565 5333



**Michael McCaffery**  
02 9565 5333



**Disclaimer**

Floor Plan measurements are approximate and are for illustrative purposes only. While we cannot doubt the floor plans accuracy , we make no guarantee , warranty or representation as to the accuracy and completeness of the floor plan

