



**6309/177-219 Mitchell Road ERSKINEVILLE NSW**

2  2  1 

Nestled in the vibrant heart of Erskineville, this generous two-bedroom apartment offers a perfect balance of natural light, space, & lifestyle. Enjoying a sun-drenched north-facing aspect, the open plan living & dining area extends effortlessly to a covered balcony w/ tranquil views of the landscaped internal gardens, the apartment features refreshed interiors & modern finishes throughout. Set within the highly sought-after Sydney Park Village, this low-maintenance home presents a fantastic opportunity for first home buyers, savvy investors, or upsizers seeking comfort & convenience without compromise. With resort-style facilities & every amenity at your doorstep, this is inner-city living at its best.

**Type** : Apartment

**Price** : \$ 1,130,000

**View** : <https://www.beaumccaffery.com.au/8413553>



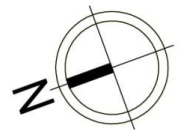
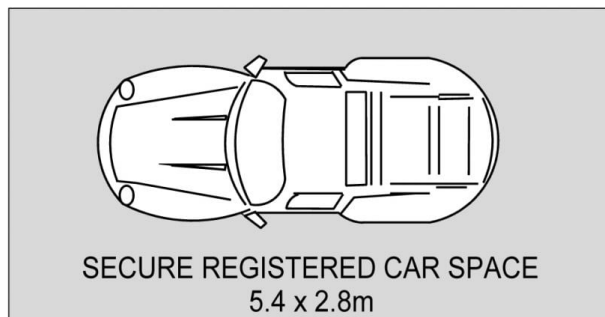
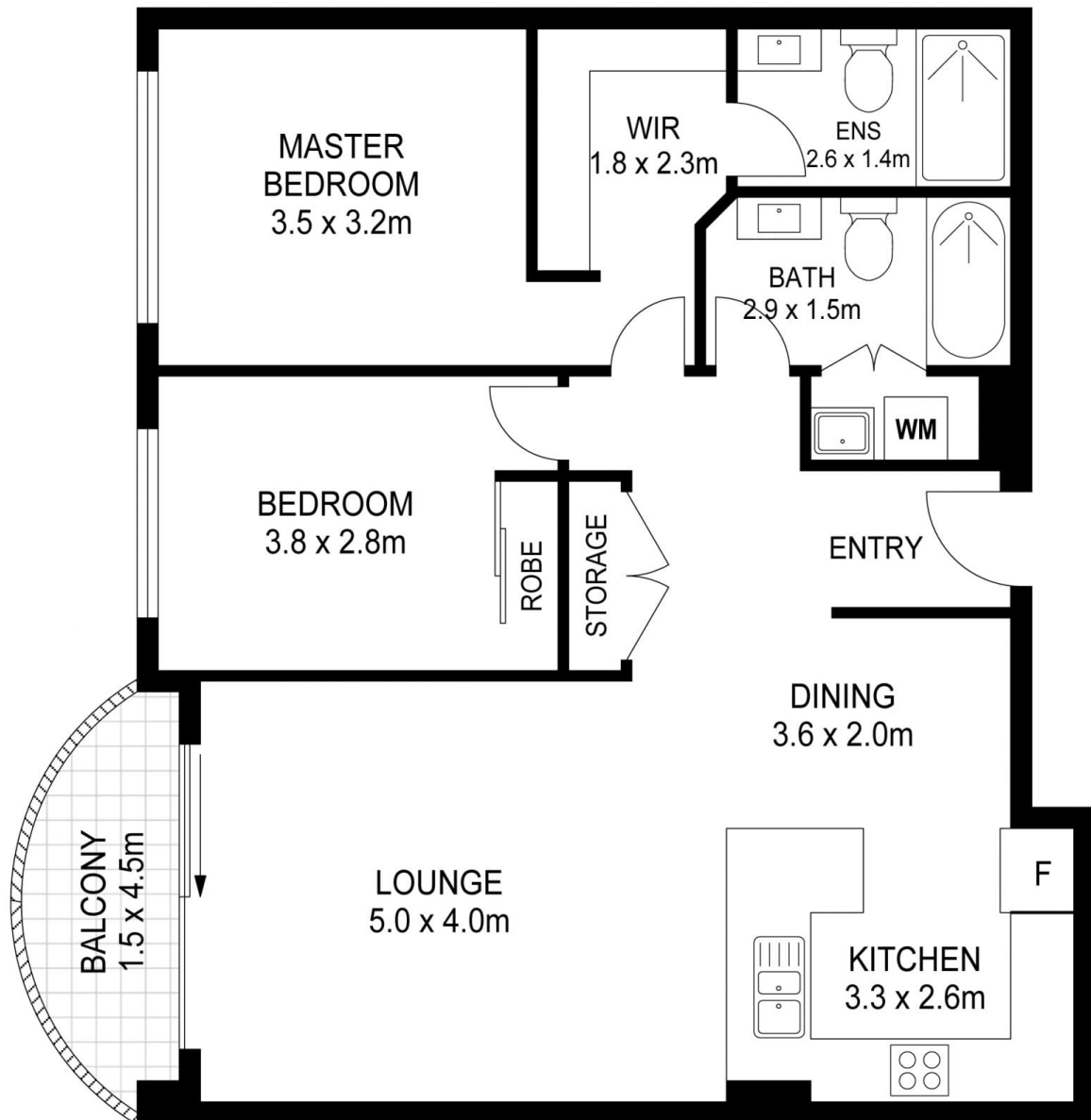
**Melissah McCaffery J P**  
02 9565 5333



**Michael McCaffery**  
02 9565 5333

Double brick & quality building

[For full version visit the website](https://www.beaumccaffery.com.au)



6309 / 177 - 219 Mitchell Road, Erskineville

**Disclaimer**

Floor plan measurements are approximate and are for illustrative purposes only. While we cannot doubt the floor plans accuracy, we make no guarantee, warranty or representation as to the accuracy and completeness of the floor plan