




**209/20 -24 Epping Road EPPING NSW**

2  2  1 

Situated in the heart of Epping this designer apartment delivers the perfect balance of style, sophistication, & convenience. Offering effortless access to public transport, top schools, vibrant eateries, & major shopping precincts, placing every lifestyle amenity at your doorstep. Flooded w/ natural light, the apartment reveals sleek interiors enhanced by premium fixtures, high-quality finishes & an open plan design that flows seamlessly to a wraparound balcony - ideal for year-round entertaining or relaxed alfresco dining. Perfectly suited to busy professionals, downsizers or investors, this residence combines low-maintenance living w/ a chic, contemporary edge in a sought-after central Epping location

Floor to ceiling glass sliding doors enabling an abundance

[For full version visit the website](https://www.beaumccaffery.com.au)

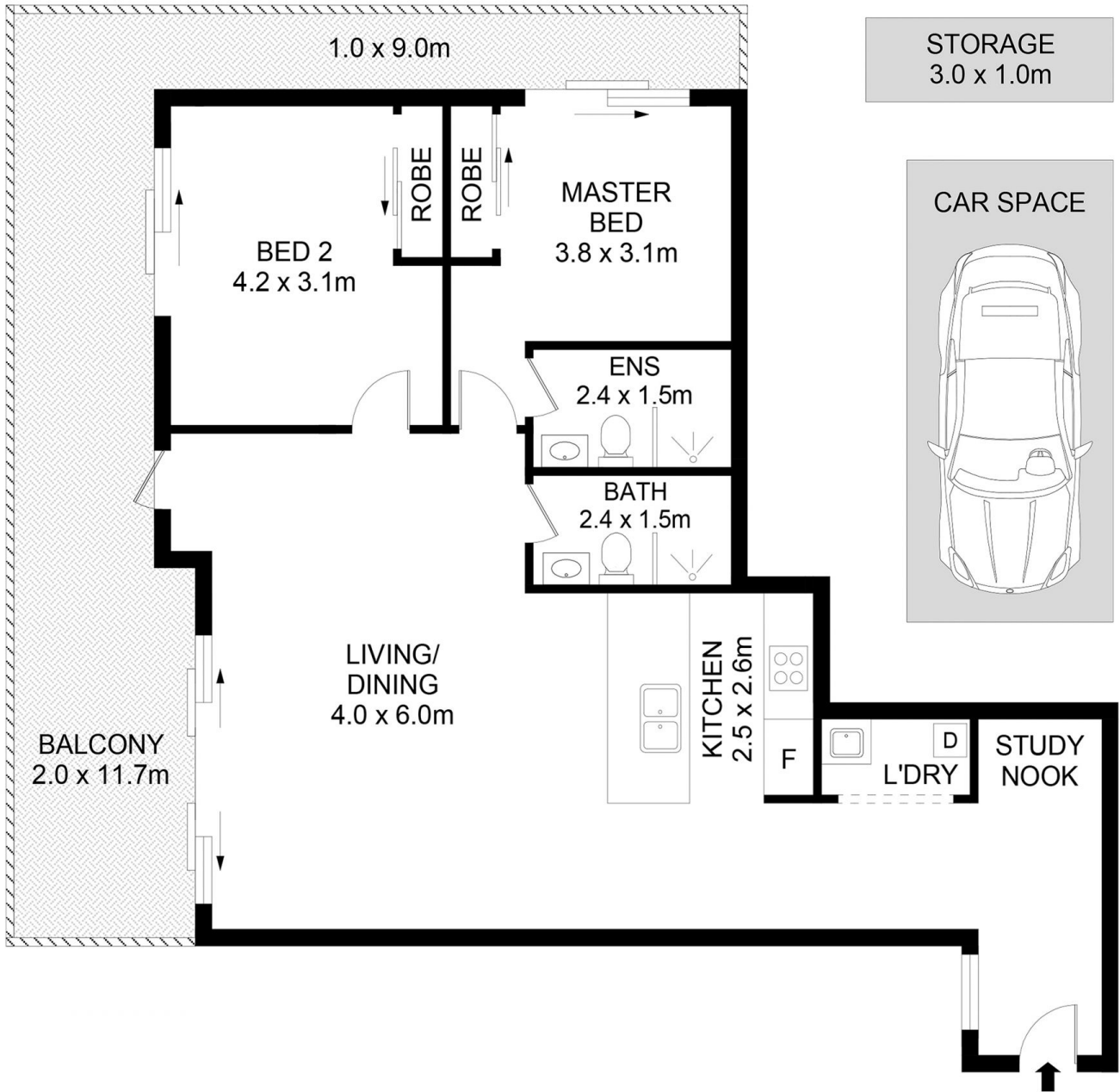
**Type** : Apartment  
**Price** : \$ 826,000  
**Building Size** : 123 sqm  
**Land Size** : 123 sqm  
**View** : <https://www.beaumccaffery.com.au/8459202>



**Michael McCaffery**  
02 9565 5333



**Melissah McCaffery J P**  
02 9565 5333



**Disclaimer**

Floor Plan measurements are approximate and are for illustrative purposes only. While we cannot doubt the floor plans accuracy, we make no guarantee, warranty or representation as to the accuracy and completeness of the floor plan

