



9707/177-219 Mitchell Road ERSKINEVILLE NSW

1  1  1 

Set on the top floor within a lush resort-style setting, this one-bedroom apartment offers a light-filled open plan layout & an easy, low-maintenance lifestyle in the heart of Erskineville. Elevated for privacy & natural light, with leafy surrounds & a peaceful position, it feels immediately relaxed & easy to live in. The open living space flows to a sunlit balcony, creating a seamless extension of the home for everyday living. Complete w/ secure parking & set within the tightly held Sydney Park Village, the home is ideal for first-home buyers or investors seeking strong long-term appeal in a tightly held community.

Double brick & quality building
Floor to ceiling glass sliding doors enabling an abundance of natural light

[For full version visit the website](https://www.beaumccaffery.com.au)

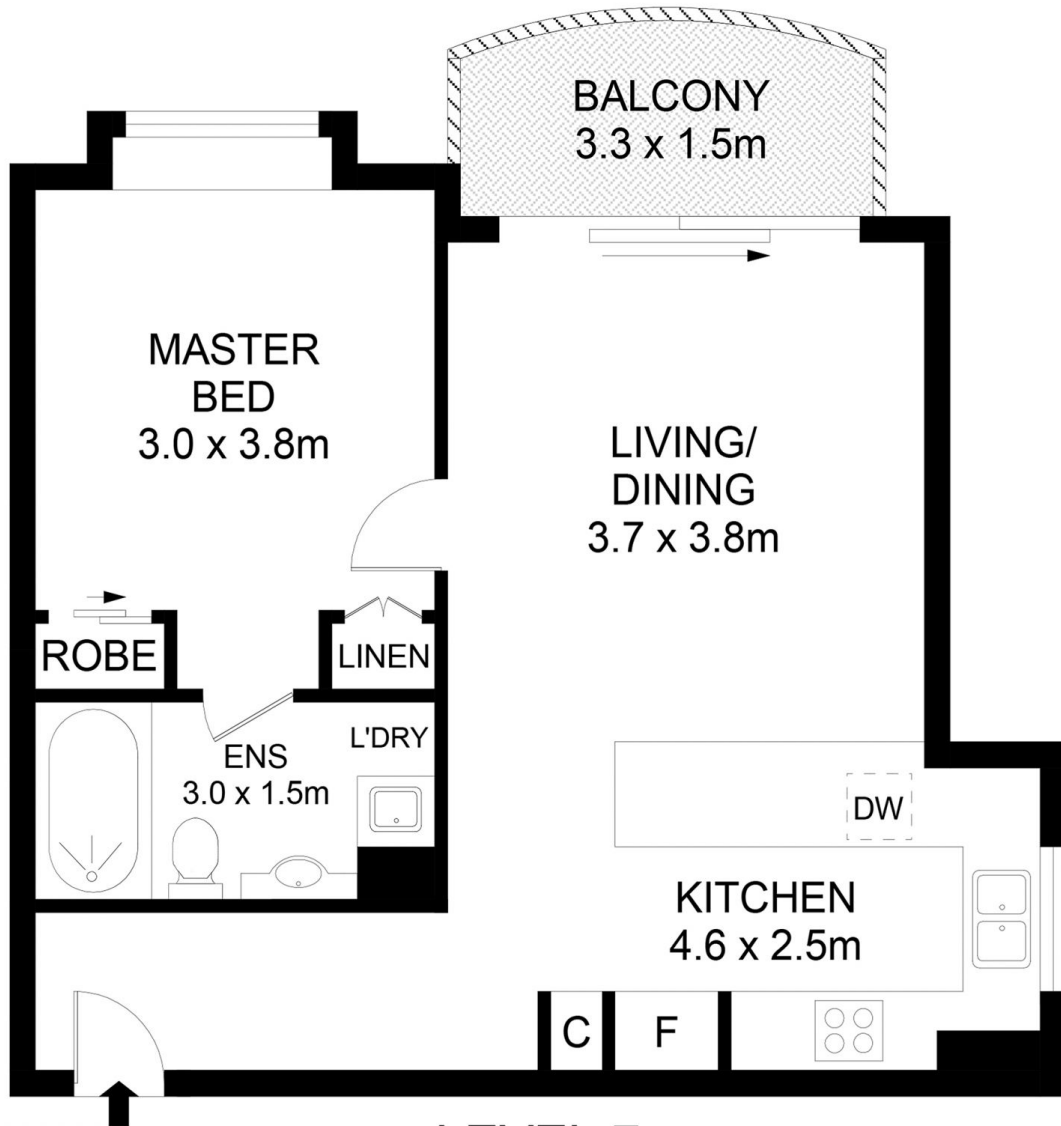
Type : Apartment
Building Size : 62 sqm
Land Size : 62 sqm
View : <https://www.beaumccaffery.com.au/8593207>



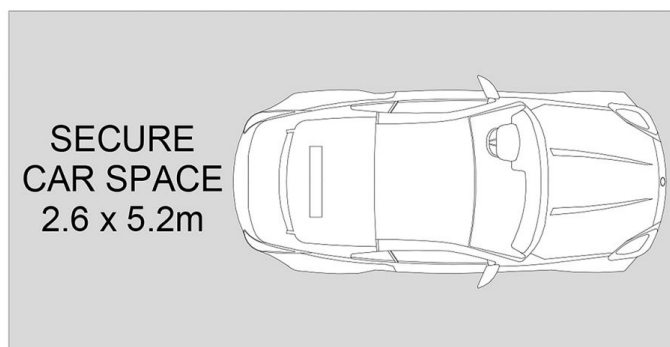
Melissah McCaffery J P
02 9565 5333



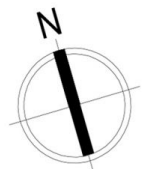
Michael McCaffery
02 9565 5333



LEVEL 7



BASEMENT



Disclaimer

Floor Plan measurements are approximate and are for illustrative purposes only. While we cannot doubt the floor plans accuracy, we make no guarantee, warranty or representation as to the accuracy and completeness of the floor plan