



2501/177-219 Mitchell Road ERSKINEVILLE NSW

2 🛏 2 🚿 1 🚗

Positioned high within the tightly held Sydney Park Village, this spacious two-level apartment offers a rare combination of scale, privacy, & exceptional outdoor living in one of Erskineville's most desirable lifestyle settings. Designed for effortless day-to-day living, the home enjoys light-filled interiors & a generous layout that feels immediately calm & welcoming. The living & dining areas flow naturally outdoors to an expansive rooftop terrace - a true extension of the home & a standout feature for relaxed entertaining, weekend brunches, or quiet evenings under the open sky. With leafy surrounds & an elevated outlook, it offers a genuine sense of retreat rarely found in apartment living. The two-level layout offers a sense of space & separation that feels more like a home than an apartment. Set within the leafy, resort-style surrounds of Sydney Park Village, the

Type : Apartment
Price : \$ 1,800,000
Building Size : 198 sqm
Land Size : 198 sqm
View : <https://www.beaumccaffery.com.au/8593367>

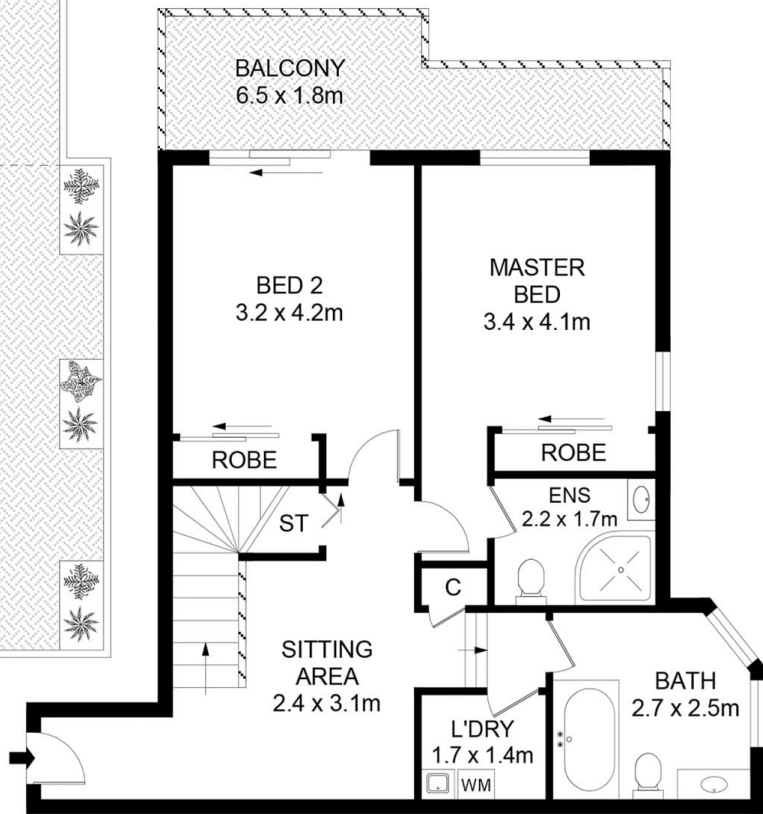
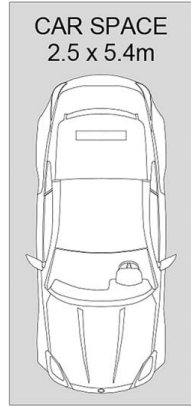
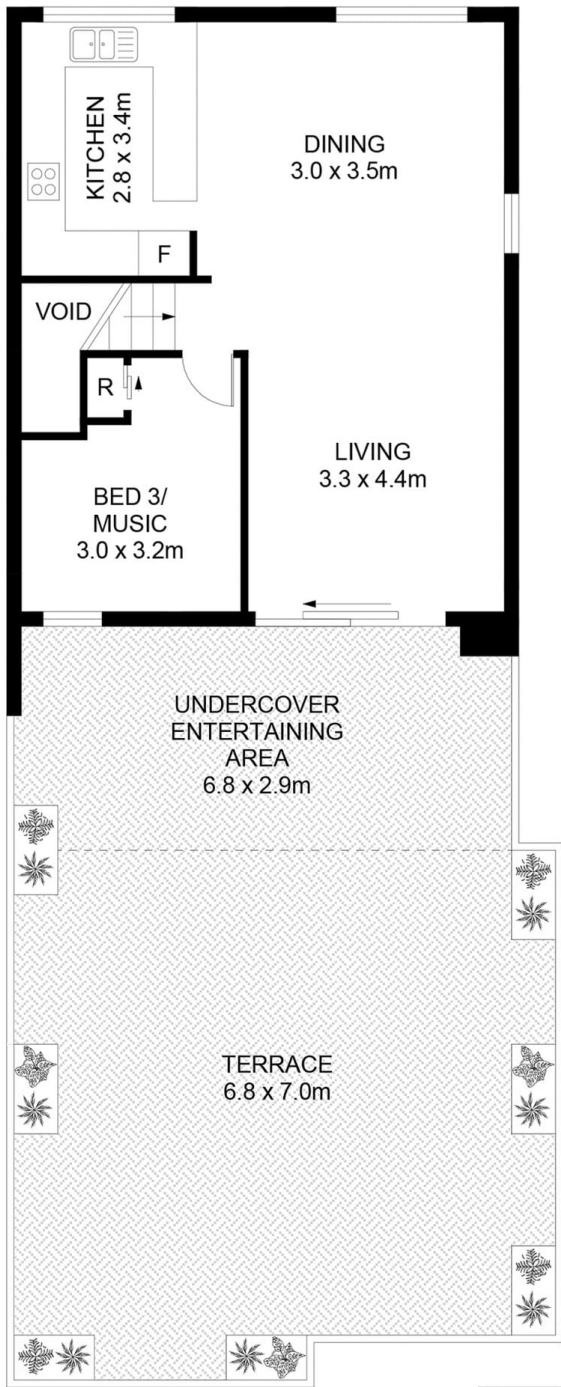


Melissah McCaffery J P
02 9565 5333



Michael McCaffery
02 9565 5333

[For full version visit the website](https://www.beaumccaffery.com.au)



Disclaimer

Floor Plan measurements are approximate and are for illustrative purposes only. While we cannot doubt the floor plans accuracy, we make no guarantee, warranty or representation as to the accuracy and completeness of the floor plan

