

**1309/177-219 Mitchell Road ERSKINEVILLE NSW**

1  1  1 

Nestled in the vibrant heart of Erskineville, this light-filled apartment delivers relaxed inner-city living w/ a tranquil, leafy outlook & effortless day-to-day comfort. Set within a well-maintained complex, it offers a welcoming retreat from the bustle while remaining closely connected to everything the Inner West has to offer. The generous living space opens to a covered balcony framed by greenery, creating an inviting extension for entertaining, unwinding or enjoying a quiet morning coffee. Natural light, a sense of privacy & an easy, low-maintenance layout make the home comfortable to live in and appealing to a wide range of buyers. With cafés, parklands, village shops, & transport all within easy reach, this is a smart opportunity for first-home buyers, a dependable investment in a high-demand location, or an ideal downsizing option for those seeking

**Type** : Apartment  
**Price** : \$ 870,000  
**Building Size** : 73 sqm  
**Land Size** : 73 sqm  
**View** : <https://www.beaumccaffery.com.au/8594397>

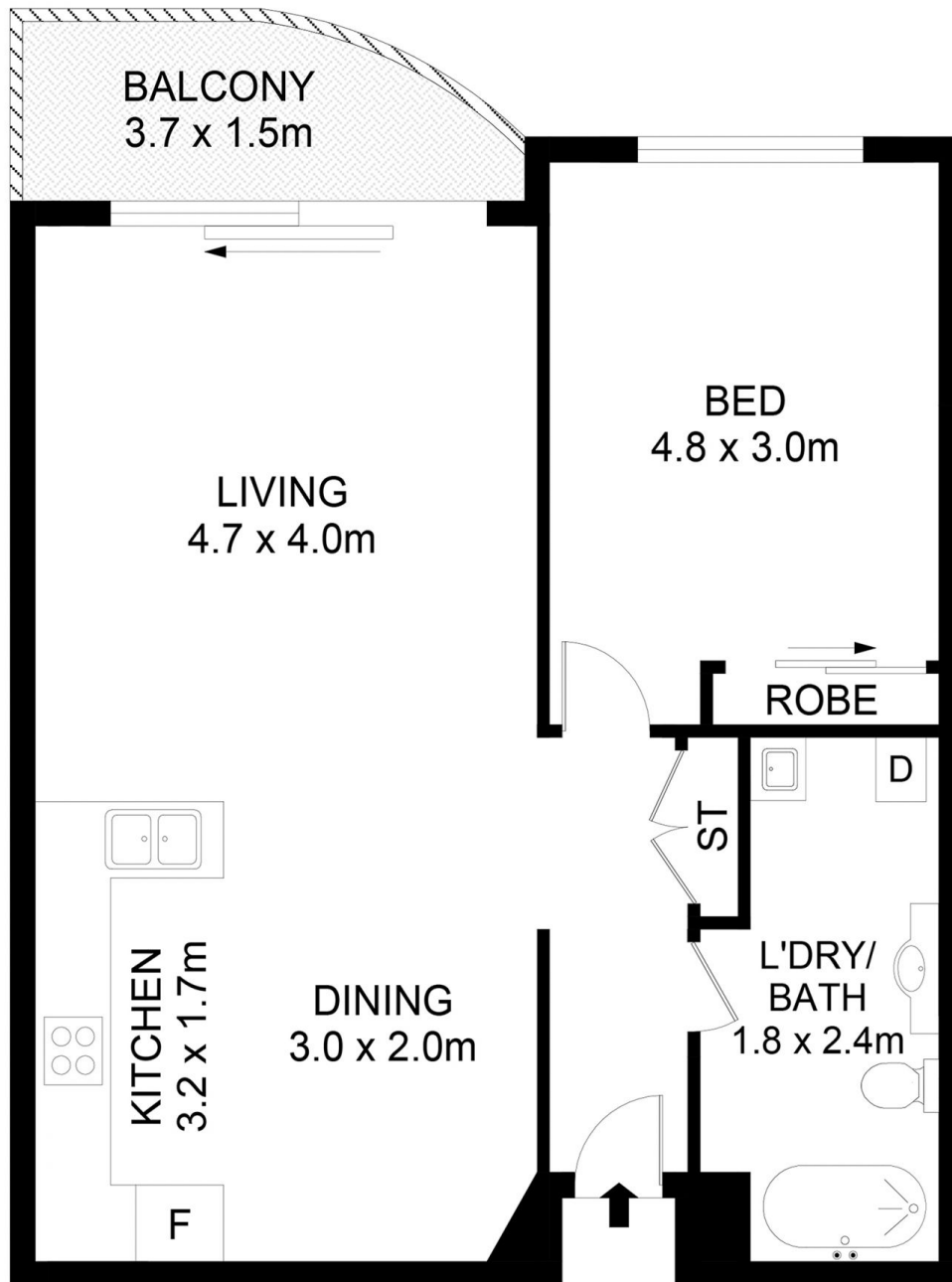


**Melissah McCaffery J P**  
02 9565 5333



**Michael McCaffery**  
02 9565 5333

[For full version visit the website](https://www.beaumccaffery.com.au)



**Disclaimer**

Floor Plan measurements are approximate and are for illustrative purposes only. While we cannot doubt the floor plans accuracy , we make no guarantee , warranty or representation as to the accuracy and completeness of the floor plan

