

**9503/177-219 Mitchell Road ERSKINEVILLE NSW**

1  1  1 

Set within the tightly held Sydney Park Village, this spacious one-bedroom apartment offers a calm, light-filled retreat w/ leafy outlooks & a prized north-facing aspect. Elevated & private, it delivers space & comfort that feels immediately welcoming from the moment you step inside. Quietly positioned within the complex and featuring an open plan layout w/ updated + light filled interiors, the apartment offers a comfortable balance of space & privacy w/ lift access, security, & everyday convenience, all within moments of Sydney Park, village cafes & transport. It's a home that suits a relaxed Inner West lifestyle - easy to live in, easy to maintain & easy to imagine as your own - an ideal first step into the Inner West.

Double brick & quality building

[For full version visit the website](https://www.beaumccaffery.com.au)

**Type** : Apartment

**Price** : \$ 820,000

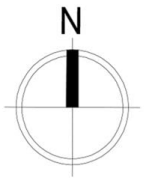
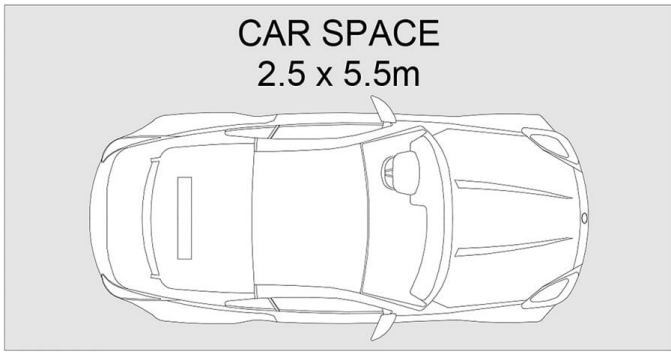
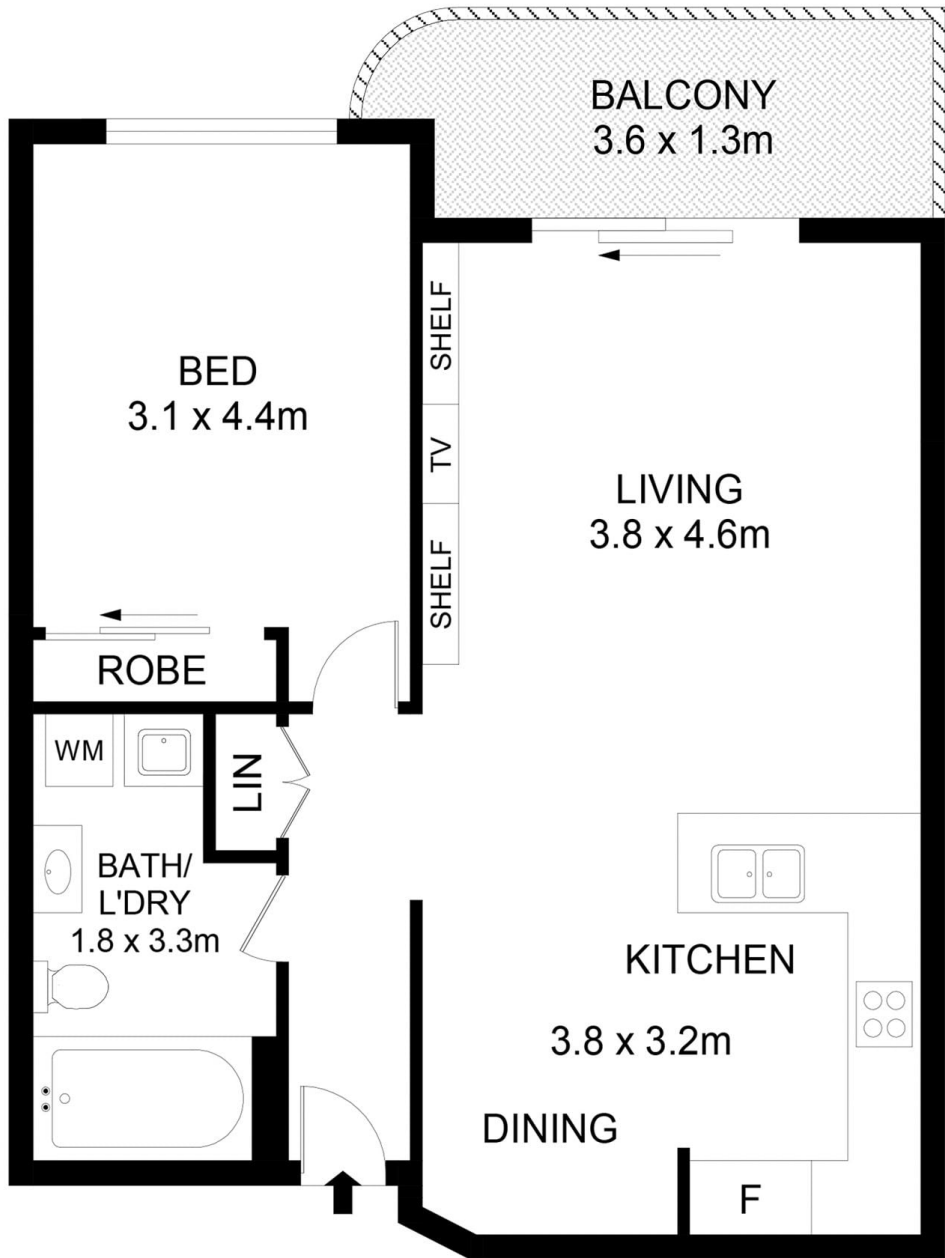
**View** : <https://www.beaumccaffery.com.au/8619869>



**Melissah McCaffery J P**  
02 9565 5333



**Michael McCaffery**  
02 9565 5333



**Disclaimer**  
Floor Plan measurements are approximate and are for illustrative purposes only. While we cannot doubt the floor plans accuracy , we make no guarantee , warranty or representation as to the accuracy and completeness of the floor plan