



**13507/177-219 Mitchell Road ERSKINEVILLE NSW**

1  1  1 

Positioned within the highly sought-after Sydney Park Village, this bright & oversized one-bedroom apartment delivers the perfect blend of space, comfort, & lifestyle appeal. Set on a prized north-facing level, it captures all-day natural light & peaceful outlooks across the leafy resort-style grounds, creating an inviting retreat, moments from Erskineville's vibrant village scene. The generous layout gives you room to live comfortably - whether you're hosting friends, working from home, or simply unwinding at the end of the day. With both the living area & bedroom flowing to the internal facing full width terrace, the home enjoys a natural indoor-outdoor rhythm that adds to its sense of space. A perfect opportunity for first home buyers, investors, or downsizers, w/ easy access to transport, shopping, & lifestyle attractions just moments away.

**Type** : Apartment  
**Building Size** : 91 sqm  
**View** : <https://www.beaumccaffery.com.au/8620833>

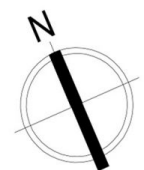
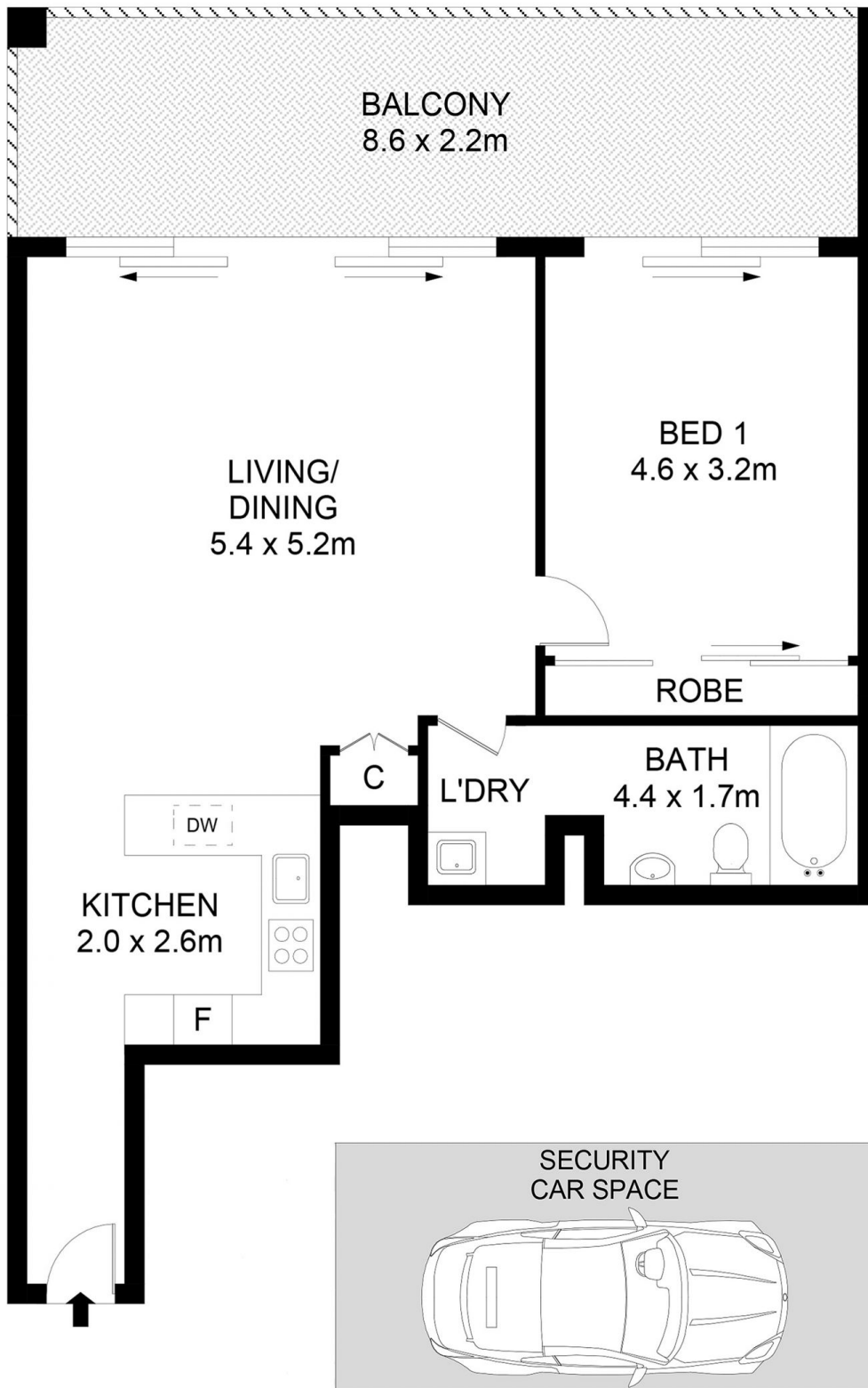


**Melissah McCaffery J P**  
02 9565 5333



**Michael McCaffery**  
02 9565 5333

[For full version visit the website](https://www.beaumccaffery.com.au)



**Disclaimer**

Floor Plan measurements are approximate and are for illustrative purposes only. While we cannot doubt the floor plans accuracy , we make no guarantee , warranty or representation as to the accuracy and completeness of the floor plan