



12204/177-219 Mitchell Road ERSKINEVILLE NSW

1  1  1 

Located within the sought-after Sydney Park Village, this one bedroom plus study garden apartment delivers effortless indoor-outdoor living in a vibrant Inner West setting. Well-proportioned & easy to live in, the home opens to a spacious living & dining area that flows seamlessly to a covered courtyard framed by established greenery. Offering a private and leafy outlook, the outdoor space feels like a natural extension of the home - ideal for morning coffee, relaxed evenings, or easy entertaining. The layout is practical & well-considered, creating a comfortable sense of separation between living & accommodation, w/ flexibility for working from home or everyday living. Comfortable as is, the home also presents an opportunity to further personalise over time. A great opportunity to step into a well-connected Inner West setting, offering a

Type : Apartment
Building Size : 101 sqm
Land Size : 101 sqm
View : <https://www.beaumccaffery.com.au/8649125>

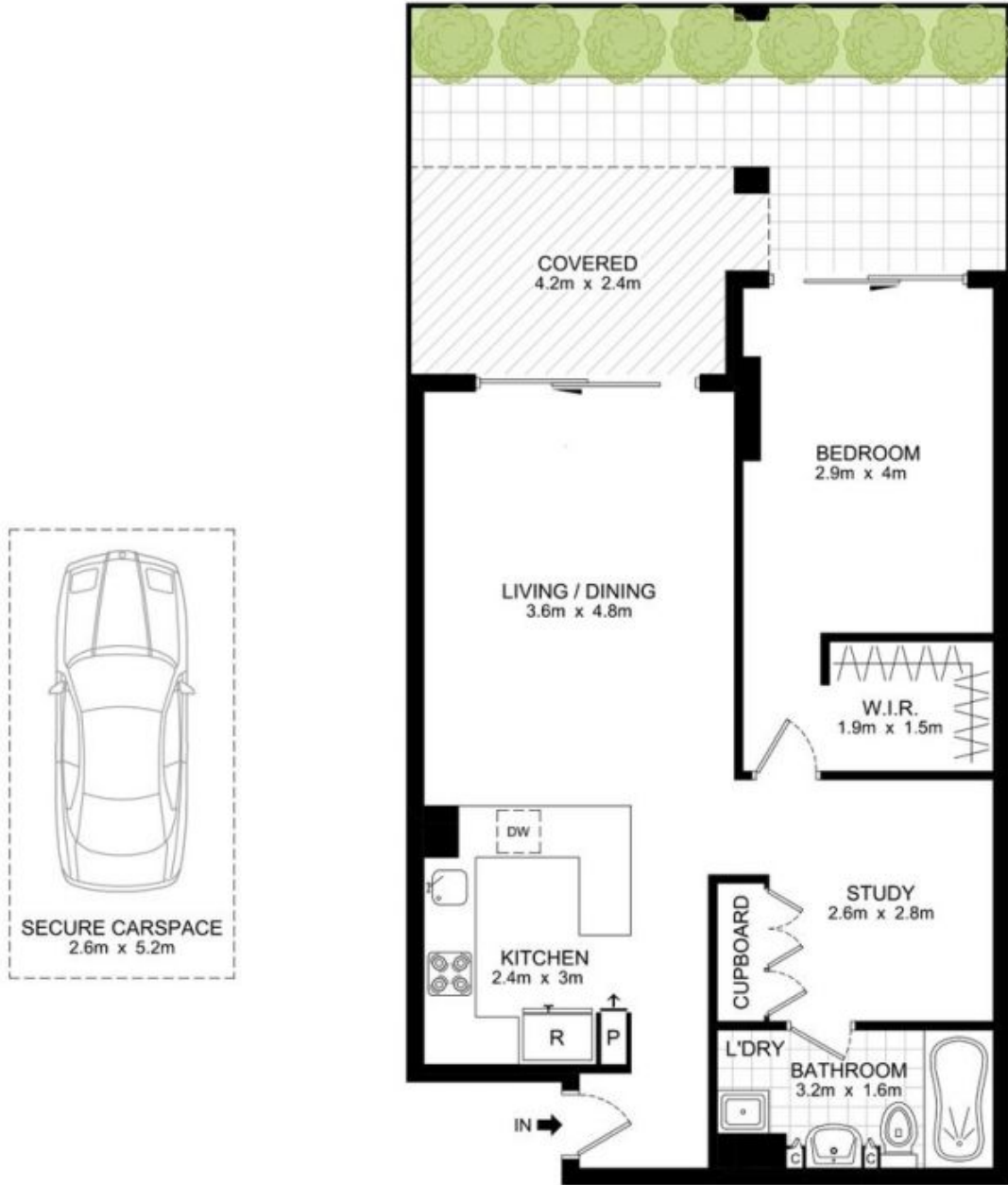


Melissah McCaffery J P
02 9565 5333



Michael McCaffery
02 9565 5333

[For full version visit the website](https://www.beaumccaffery.com.au)



BASEMENT

LEVEL 2

12204/177-219 Mitchell Road, Erskineville

DISCLAIMER: THIS PLAN IS FOR ILLUSTRATIVE PURPOSES ONLY. DIMENSIONS ARE APPROXIMATE AND IT DOES NOT CONSTITUTE PART OF ANY LEGAL DOCUMENTS.

