



15401/177-219 Mitchell Road ERSKINEVILLE NSW

1  1  1 

Situated in the newest stage of the development & boasting a sun-soaked East aspect, this apartment delivers a comfortable & well-balanced lifestyle within a leafy, resort-style setting. Thoughtfully laid out, the home includes a separate study, offering flexibility as a home office, nursery, or additional living space. Light-filled interiors create an inviting feel throughout, w/ an open plan living & dining area flowing seamlessly onto a covered entertainer's balcony. Enjoying an elevated position w/ a lush outlook across the complex's manicured gardens & tennis courts, the outdoor space becomes a natural extension of the home - ideal for morning coffee or relaxed evenings. Well-presented & easy to live in, the apartment offers a low-maintenance lifestyle within a highly regarded community, complete w/ resort-style facilities & a strong

Type : Apartment
Price : For Sale
Building Size : 76 sqm
View : <https://www.beaumccaffery.com.au/8656397>

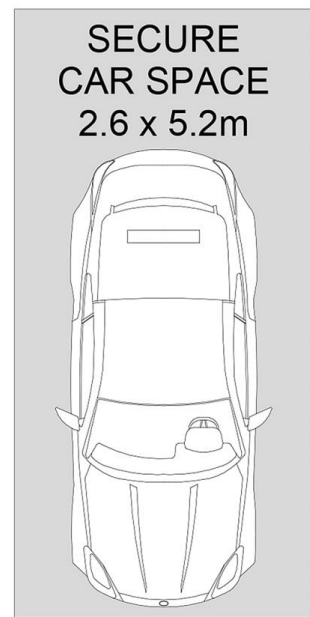
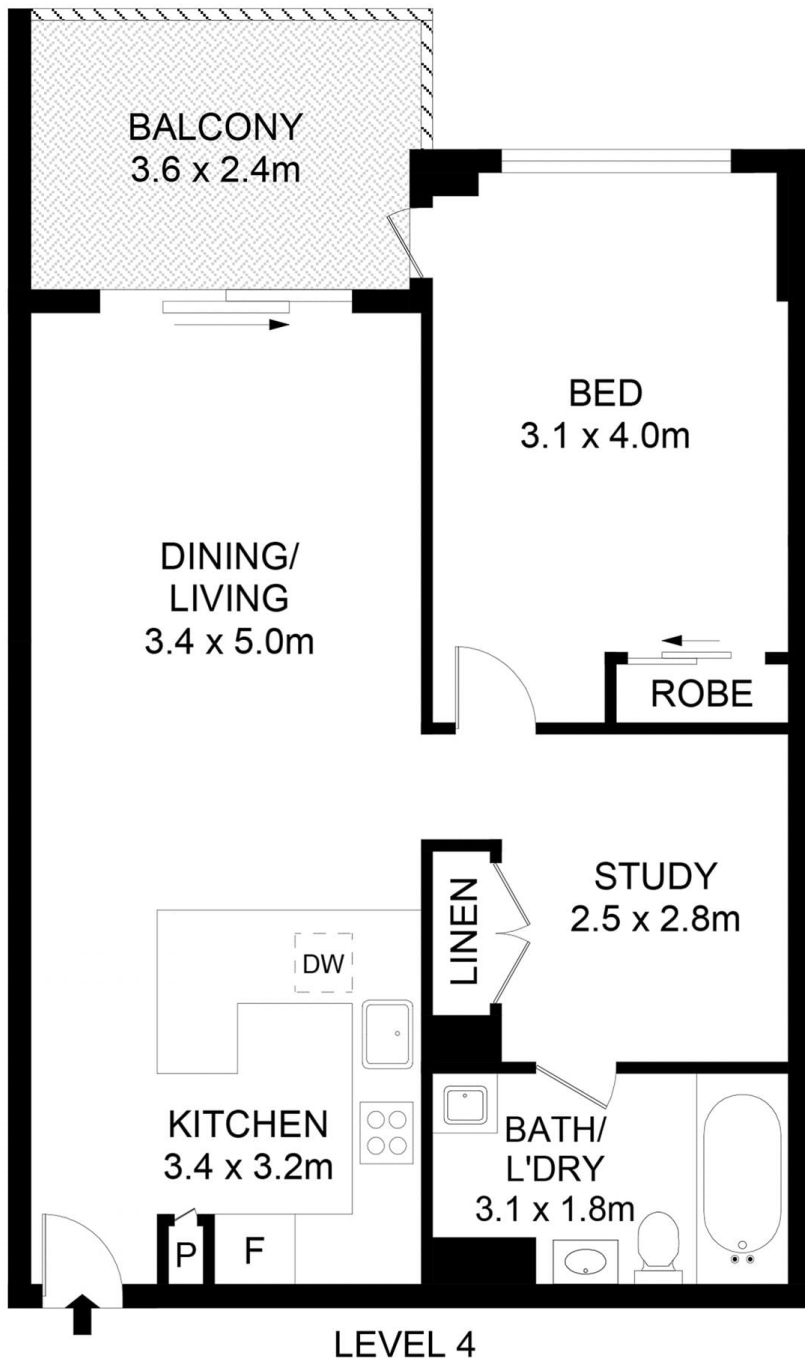


Michael McCaffery
02 9565 5333



Melissah McCaffery J P
02 9565 5333

[For full version visit the website](https://www.beaumccaffery.com.au)



BASEMENT

Disclaimer

Floor Plan measurements are approximate and are for illustrative purposes only. While we cannot doubt the floor plans accuracy, we make no guarantee, warranty or representation as to the accuracy and completeness of the floor plan

