



3803/177-219 Mitchell Road ERSKINEVILLE NSW

2  2  1 

Holding a prized elevated position within Sydney Park Village, this expansive two-bedroom residence delivers a sense of scale & openness that feels closer to a home than a typical apartment. Spanning 127sqm on title, the layout unfolds into a wide open living & dining zone, where full-height glass draws in natural light & connects seamlessly to a generous entertainer's balcony. Framed by leafy surrounds & capturing elevated district views stretching toward the city skyline, the outdoor space offers a true extension of the interiors - ideal for entertaining or unwinding above the surrounds. A second, separate balcony off the main bedroom provides a more private outdoor retreat with city views. The floorplan is both generous & functional, w/ well-separated bedrooms positioned away from the main living zone. The oversized

Type : Apartment
Price : \$ 1,350,000
Building Size : 127 sqm
Land Size : 127 sqm
View : <https://www.beaumccaffery.com.au/8661169>

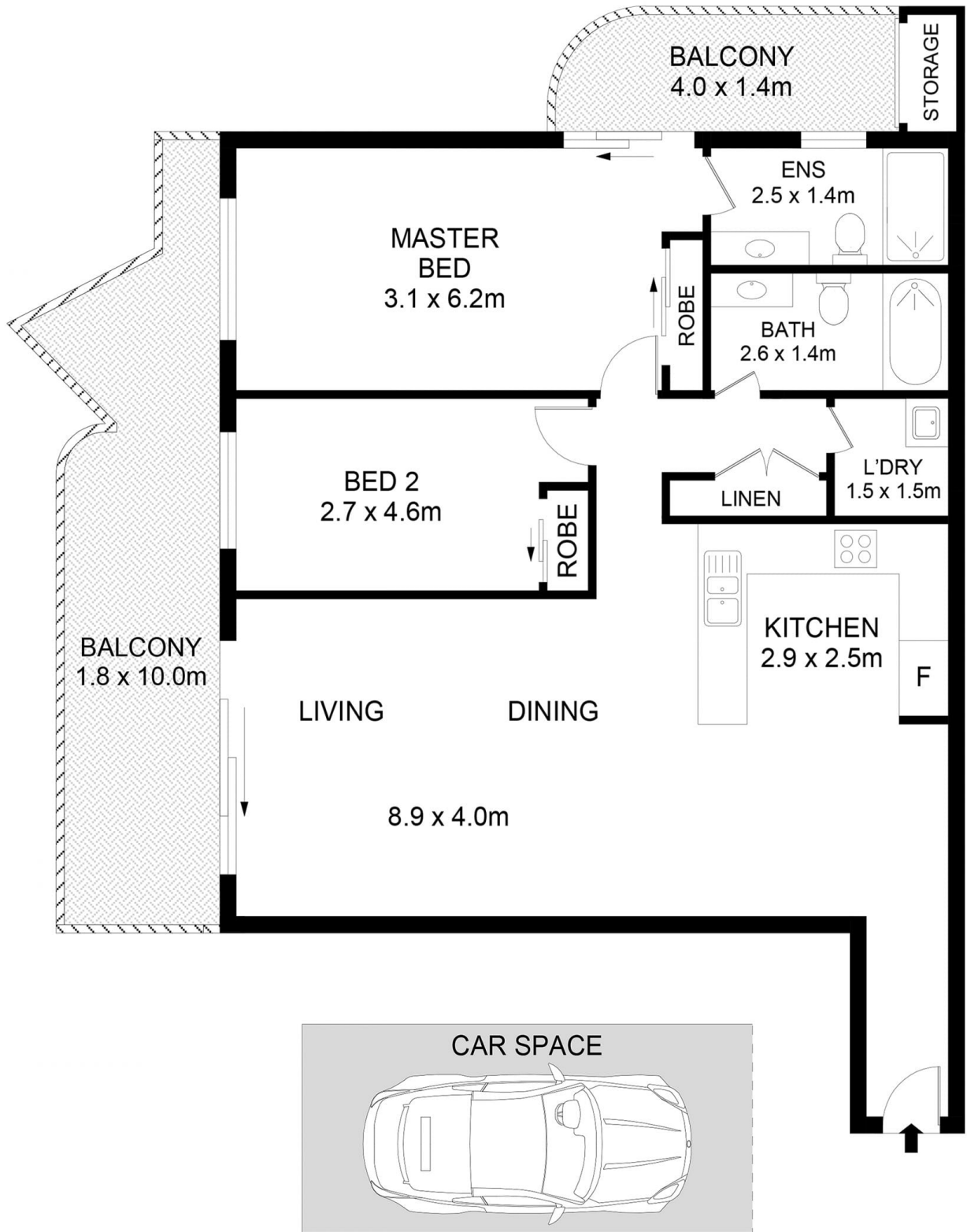


Michael McCaffery
02 9565 5333



Melissah McCaffery J P
02 9565 5333

[For full version visit the website](https://www.beaumccaffery.com.au)



Disclaimer

Floor Plan measurements are approximate and are for illustrative purposes only. While we cannot doubt the floor plans accuracy, we make no guarantee, warranty or representation as to the accuracy and completeness of the floor plan

