



**13406/177-219 Mitchell Road ERSKINEVILLE NSW**

**3**  **2**  **2** 

One of the larger offerings within the sought-after Sydney Park Village, this North facing three bedroom residence delivers an impressive sense of scale rarely found in apartment living. Spanning 161 sqm & positioned on the corner of the newest stage of the complex, the home combines space, natural light & privacy within a well-established, resort-style setting. With its house-like proportions & flexible layout, the home will appeal to families, upsizers & downsizers seeking room to move without compromising on lifestyle. Generous living & dining areas open seamlessly to a covered entertainer's balcony, creating an effortless connection between indoor & outdoor spaces, ideal for both everyday living & hosting. The well-considered floorplan provides excellent separation between living & accommodation, w/ three spacious

**Type** : Apartment  
**Price** : \$ 1,920,000  
**Building Size** : 161 sqm  
**Land Size** : 161 sqm  
**View** : <https://www.beaumccaffery.com.au/8661195>

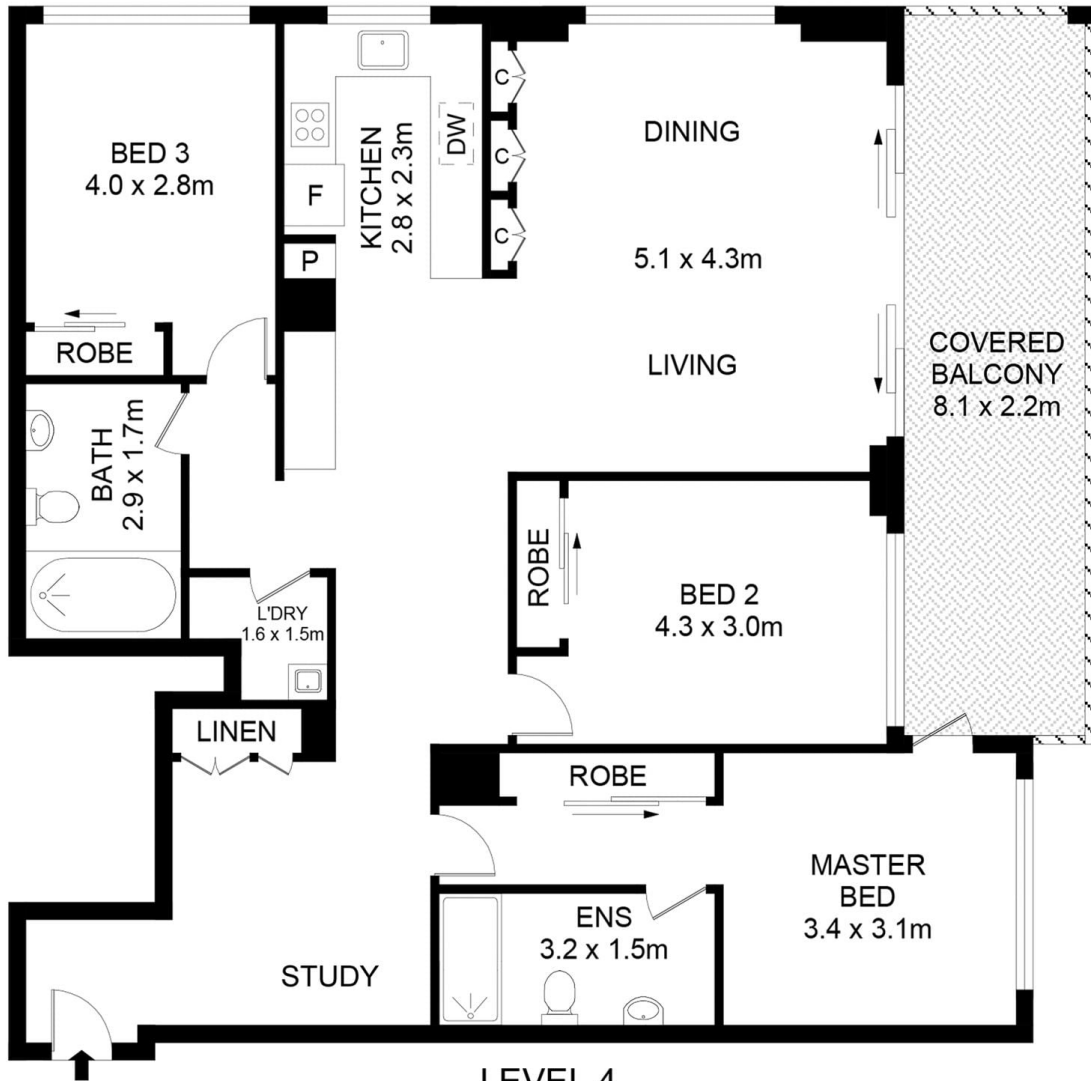


**Melissah McCaffery J P**  
02 9565 5333

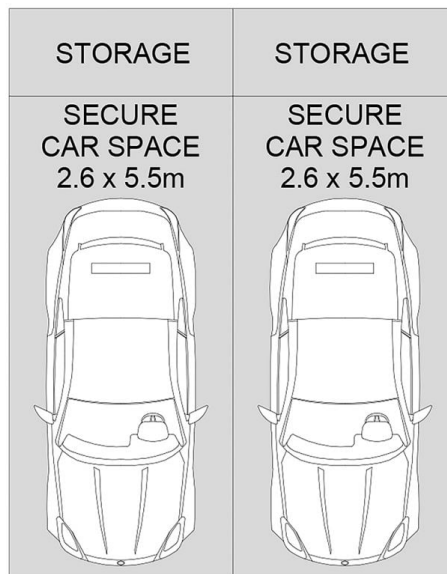


**Michael McCaffery**  
02 9565 5333

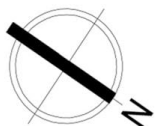
[For full version visit the website](https://www.beaumccaffery.com.au)



LEVEL 4



BASEMENT



**Disclaimer**

Floor Plan measurements are approximate and are for illustrative purposes only. While we cannot doubt the floor plans accuracy, we make no guarantee, warranty or representation as to the accuracy and completeness of the floor plan